

State of Vermont
Department of Public Service
112 State Street
Montpelier, VT 05620-2601
<http://publicservice.vermont.gov>

[phone] 802-828-2811
[fax] 802-828-2342
[tdd] 800-734-8390

January 15, 2018

The Honorable Christopher Bray, Chair
Senate Committee on Natural Resources and
Energy

The Honorable Steve Carr, Chair
House Committee on Energy and Technology

The Honorable Ann Cummings, Chair
Senate Committee on Finance

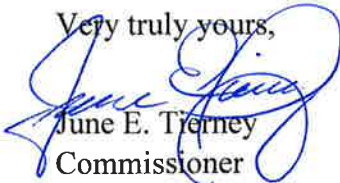
Re: Connectivity Division Annual Report

Honorable Senators and Representatives:

I am pleased to submit this report on the activities of the Pubic Service Department's Connectivity Division, pursuant to 30 V.S.A. § 202e(e).

If you have any questions or concerns upon reading this report, please do not hesitate to contact myself or Clay Purvis, Director for Telecommunications and Connectivity.

Very truly yours,



June E. Tierney
Commissioner



Report to the General Assembly on the Activities of the Connectivity Division for Fiscal Year 2017

January 15, 2018

Contents

| | |
|--|------------|
| Introduction..... | 5 |
| Activities of 2017..... | 6 |
| Operating and Financial Statements | 7 |
| Broadband Availability Data | 11 |
| Wireless Communications | 12 |
| Broadband Action Plan | Appendix 1 |
| Broadband Availability Maps | Appendix 2 |
| Wireless Coverage Maps | Appendix 3 |
| Broadband Statistics ¹ | Appendix 4 |

¹ Appendix 4 is formatted for tabloid (11"x17") size paper.

Introduction

Every year, on or before January 15th, the Department of Public Service (“Department”), through the Division for Telecommunications and Connectivity (“Division”) submits an annual report to the General Assembly. This report is completed in conjunction with the Telecommunications and Connectivity Advisory Board and Regional Planning Commissions.

This report includes the following:

1. Financial statements covering the Division’s operations during the year including:
 - a. A summary of all grant awards
 - b. Contracts and agreements entered into by the Division
2. The areas served and the areas not served by broadband that has a download speed of at least 4 Mbps download and an upload speed of at least 1 Mbps
3. The areas served and the areas not served by broadband that has a download speed of at least 25 Mbps download and an upload speed of at least 3 Mbps
4. The areas served and the areas not served by broadband that has a combined download and upload speed of at least 100 Mbps
5. If monetarily feasible, the areas served and the areas not served by wireless communications
6. Cost estimates to provide such service to the areas not served in the four levels of service listed above

In addition, the report shall include, “with the assistance of the Telecommunications and Connectivity Board and with input from the regional planning commissions, an action plan that conforms with the State Telecommunications Plan along with goals stated in 30 V.S.A. § 202e(a).” Division staff met with the Telecommunications and Connectivity Advisory Board on December 11 to receive input on the Action Plan and this report.. The Division presented the Action Plan to the Regional Planning Commissions on January 4th.

Telecommunications and Connectivity Division

The Division works to improve access to affordable telecommunications technology for all Vermonters, supports universal availability of voice and broadband, and leads the state’s telecommunications policy and regulatory efforts. The Division is led by a division director and has three full time staff members. The Division oversees the telephone and cable industries, and advocates for the public interest in telecommunications matters before the Public Utilities Commission, including review of mergers, tariffs, and licenses. The Division is responsible for the preparing the state Telecommunications Plan. The Division annually gathers broadband availability information to identify underserved locations statewide and prepares maps and statistics depicting information at three speed tiers. The Division meets with communities throughout the state in an effort to promote and expand access to high speed Internet at underserved locations. The Connectivity Division awards broadband development grants from the Connectivity Initiative as part of its effort to bring high speed Internet to Vermont's hardest to reach locations. The Division manages and leases roughly 340 route miles of state-owned open access fiber optic cable located throughout Vermont. The Division also administers the

Vermont Telecommunication Relay Service, connecting individuals who are deaf, deaf-blind, hard-of-hearing, or have a speech disability, with users of standard telephones.

Activities of 2017

Connectivity Advisory Board: The Telecommunications and Connectivity Advisory Board is an eight-member board charged with making recommendations to the Commissioner of Public Service regarding his or her telecommunications responsibilities and duties. The Board consists of members of government and the public. The Board provides advice to the Commissioner of Public Service on a number of topics, including telecommunications policy and planning, and the Connectivity Initiative grant program. For much of 2016 and 2017, the Board lacked members sufficient for a quorum. Department staff found and sought appointment for two members. In 2017 the Connectivity Advisory Board met four times in 2017 to review grant proposals, discuss statutory reporting, and to review additional tasks and projects.

Connectivity Initiative: Through the CI Grant program, \$547,500 in grant funding was awarded to three different providers for expansion projects in six towns, connecting 307 new addresses. Telecom and Connectivity staff has met with twenty-two rural and underserved communities to discuss their individual town broadband needs. These towns may apply for future rounds of Connectivity Initiative funding.

State-Owned Dark Fiber: All fiber construction projects are complete and in operation.

Mapping: DPS staff issued a data request to telecom providers in the fall of 2017, and has compiled the data for this report.

Regulatory Matters: Division staff are closely involved with the regulatory side of the Department's operations. 2017 saw several large regulatory dockets, including Burlington Telecom's CPG renewal (Docket #8719), Comcast CPG renewal (Docket #8301), and the transfer of control by merger of the FairPoint companies to Consolidated Communications (Docket #8881). Staff also worked closely with the Department of Children and Families to implement changes to the Vermont Lifeline program made in Act 41 of this Biennium. Additionally, staff reviewed and commented on numerous routine regulatory and compliance filings.

Act 53 Legislative Report: Act 53 directed the Division to make recommendations to the General Assembly on how the Public Utilities Commission can improve public access to its proceedings using video conferencing technology. The Division dedicated one staff member to this project full time for three months. The report was filed on December 14th, 2017.

Telecommunications Plan – The Division commenced the process for updating the Vermont Ten Year Telecommunications Plan.

High Cost Program Certifications: At the end of 2017, seven Vermont telephone companies were certified as “Vermont Eligible Telecommunications Providers” (Dockets Nos. 8416 and 8542). The Connectivity Fund paid \$475,000 in high cost support to five telephone companies, which

represented three years of support. The FairPoint Communications companies have not yet received support. Support was conditional on approval of FairPoint’s “Alternative Buildout Plan,” which the Public Utilities Commission approved on December 21st, 2017.

Operating and Financial Statements

Summary of Grant Awards

The Division administers a grant program established under 30 V.S.A. §7515b designed “to provide each service location in Vermont access to Internet service that is capable of speeds of least 10 Mbps download and 1 Mbps upload, or the FCC speed requirements established under Connect America Fund Phase II...” The program is funded through the Vermont Universal Service Fund. Two rounds of grants have been awarded, see tables 1 and 2 below. Awards for a third round of grants are pending.

Table 1
Round: CI 2015
Date of Award: May 5, 2015

| Company | Amount Awarded | Number Underserved | Cost per Address | Town | Technology | Actual Amount |
|--------------------|------------------|--------------------|------------------|------------------|------------|---------------------|
| Comcast | \$1,425 | 1 | \$1,425 | Jamaica | Cable | \$952.59 |
| Comcast | \$215,163 | 13 | \$16,551 | Norwich | Cable | \$58,897.37 |
| ECFiber | \$49,984 | 17 | \$2,940 | Randolph | FTTP | \$49,984.00 |
| ECFiber | \$267,944 | 67 | \$3,999 | Royalton | FTTP | \$267,944.00 |
| ECFiber | \$39,976 | 20 | \$1,999 | Pittsfield | FTTP | \$39,976.00 |
| ECFiber | \$1,500 | 2 | \$750 | Norwich/Thetford | FTTP | \$1,500.00 |
| FairPoint | \$200,000 | 36 | \$5,556 | Reading | DSL | \$164,488.00 |
| FairPoint | \$90,000 | 16 | \$5,625 | Bradford | DSL | \$90,000.00 |
| Non-Standard Drops | \$19,951 | | | | | \$4,000.00 |
| Total: | \$885,943 | 172 | | 9 Towns | | \$677,741.96 |

Table 2
 Round: CI 2016-01
 Date of Award: October 16, 2016

| Company | Amount Awarded | Number Underserved | Town | Technology |
|---------------|------------------|--------------------|-----------------|------------|
| SVBC | \$22,505 | 71 | Readsboro | WISP |
| FairPoint | \$90,000 | 108 | Peru | DSL |
| FairPoint | \$87,500 | 57 | Lowell | DSL |
| FairPoint | \$90,000 | 50 | Canaan | DSL |
| EC Fiber | \$13,500 | 13 | Stockbridge | FTTP |
| EC Fiber | \$43,500 | 38 | Norwich | FTTP |
| EC Fiber | \$12,000 | 9 | Sharon | FTTP |
| EC Fiber | \$24,000 | 14 | Randolph | FTTP |
| EC Fiber | \$10,500 | 6 | Royalton | FTTP |
| EC Fiber | \$17,000 | 9 | Norwich | FTTP |
| EC Fiber | \$36,000 | 19 | Chelsea | FTTP |
| Pear Networks | \$22,695 | 14 | W. Craftsbury | FTTP |
| Pear Networks | \$27,795 | 15 | S.W. Craftsbury | FTTP |
| WCVT | \$61,638 | 28 | Charlotte | FTTP |
| Total: | \$558,633 | 451 | 13 Towns | |

Table 3
 Round: CI 2016-02
 Date of Award: August 2, 2017

| Company | Amount Awarded | Number Underserved | Cost per Address | Town | Technology |
|---------------|------------------|--------------------|------------------|-------------------|------------|
| FairPoint | \$55,000 | 53 | \$1,038 | Reading/Woodstock | DSL |
| FairPoint | \$120,000 | 109 | \$1,101 | Whitingham | DSL |
| EC Fiber | \$13,300 | 7 | \$1,900 | Royalton | FTTP |
| EC Fiber | \$28,000 | 13 | \$2,154 | Stockbridge | FTTP |
| EC Fiber | \$31,200 | 11 | \$2,836 | Randolph | FTTP |
| Comcast | \$300,000 | 114 | \$2,632 | Cavendish | Cable |
| Total: | \$547,500 | 307 | | 6 Towns | |

Connectivity Fund

The Vermont Universal Service Fund (VUSF) is a special fund supported through an assessment on retail telecommunications services provided within Vermont. The VUSF is managed by a fiscal agent, Solix, Inc., under contract with the Department of Public Service. In accordance with 30 V.S.A. § 7511, monies collected by the fiscal agent are deposited into the VUSF and are used to support the following costs and programs, ranked in order of priority:

- (A) Costs payable to the fiscal agent under its contract with the Commissioner;
- (B) The Vermont Telecommunications Relay Service (and the Equipment Distribution Program);
- (C) The Vermont Lifeline program;
- (D) Enhanced-911 services;
- (E) The Connectivity Fund (comprised of the Connectivity Initiative and the High Cost Program).

In Act 190 of 2014, the legislature set the VUSF assessment rate at a flat 2%. Act 41 of 2015 transferred oversight responsibility of the VUSF to the Department of Public Service. The current 2% charge is assessed on telecommunications services that include telephone, mobile wireless voice, and prepaid wireless. Voice over Internet Protocol (VoIP) providers also contribute to the VUSF. The rate is collected on telecommunications services only; broadband internet service revenues are not subject to the assessment.

Funds designated for use by the Connectivity Fund are apportioned as follows: 55% of funds support the Connectivity Initiative, and 45% of the funds support the High Cost Program. The High Cost Program provides financial support to Vermont Eligible Telecommunications Carriers (VETC) for lines operating in designated high cost areas. The Connectivity Initiative is a grant program administered by the Division for the purpose of expanding broadband technologies to underserved areas. Activities under this program are discussed on pages 2-3 of this report.

FY2016 Funds Designated for Use by the Connectivity Fund

Pursuant to its authority under 30 V.S.A. § 7516, VUSF fiscal agent Solix designated the amount of \$1,140,665 for use by the Connectivity Fund in fiscal year 2016. Of the \$1,140,665, \$270,000 was appropriated to the Department of Public Service, \$391,799.25 was allocated to the High Cost Program, and \$478,865.75 was allocated to the Connectivity Initiative. \$77,407 of unspent grant funds are applied to this year's Connectivity Initiative award, bringing the total to \$556,273.

FY2017 Funds Designated for Use by the Connectivity Fund

Pursuant to their authority under 30 V.S.A. § 7516, the fiscal agent designated the amount of \$461,000 for use by the Connectivity Fund in fiscal year 2017. Of the \$461,000 designated, \$253,550 was made available to the Connectivity Initiative grant program and \$207,246 was made available to the High Cost Program. In addition, the Connectivity Initiative grant program of the Connectivity Fund received a one-time appropriation of \$300,000 in fiscal year 2017 as part of the FY17 Capital Construction Budget Adjustment Act 160. The total designated for disbursement in 2017 is \$553,550.

FY2018 Funds Designated for Use by the Connectivity Fund

This year, the VUSF fiscal agent determined that there was \$400,000 available to the Connectivity Fund for Fiscal Year 2018. This money was apportioned to the connectivity programs in accordance with state law. Fifty-five percent, or \$220,000, was apportioned to the Connectivity Initiative. Forty-five percent, or \$180,000, was dedicated to the High Cost Program.

Connectivity Fund Financials Ending June 30, 2017

| | (In Thousands) 2017 Connectivity | | |
|--|--|---------------|-----------------|
| | YTD Total | Initiative | High Cost |
| Disbursements | | | |
| Connectivity initiative | \$ (423) | \$ (423) | \$ - |
| High cost | (475) | - | (475) |
| | <u>(898)</u> | <u>(423)</u> | <u>(475)</u> |
| Interest income | 10 | 6 | 4 |
| Appropriations | | | |
| FY17 Connectivity fund from VUSF | 461 | 254 | 207 |
| FY17 Capital bill- unfunded, due from Capital Bill | 300 | 300 | - |
| | <u>761</u> | <u>554</u> | <u>207</u> |
| Change in fund balance | <u>\$ (127)</u> | <u>\$ 137</u> | <u>\$ (264)</u> |
| Fund balance, beginning of year | \$ 2,800 | | |
| Fund balance, funded by VUSF, end of year | \$ 2,373 | | |
| Fund balance, unfunded, due from Capital Bill, end of year | 300 | | |
| Total fund balance, end of year | <u>\$ 2,673</u> | | |
| Fund balance, uncommitted | \$ 2,109 | | |
| Fund balance, committed | \$ 564 | | |

Broadband Availability Data

Areas served at 4 Mbps down and 1 Mbps upload speed or better

Data on broadband availability as of June 30th, 2017, indicates that of the 303,835² business and residential locations (E911 building locations) in the state, broadband service of at least 4/1 Mbps or better is presently available from an Internet service provider at all but 20,898 locations. The previous report showed 28,382 underserved locations; an improvement of 7,487 locations. Information showing the number of locations that are served and underserved on a town and county basis is included in Appendix 4 and depicted as a map in Appendix 2.

A very high-level attempt has been made to identify the cost to deploy networks that can provide broadband with speeds of 4/1 Mbps based on estimate information received during the Connectivity Grant rounds that have occurred. The average cost is approximately \$1,600 per site which means, for 20,898 locations, the cost would be upwards of \$33 million.

Areas served at 25 Mbps down and 3 Mbps upload speed or better

Internet service provider data of broadband availability, as of June 30, 2017, indicates that of the 303,835 business and residential locations (E911 building locations) in the state, broadband service of at least 25/3 Mbps or better is presently available from a service provider at all but 81,795 locations. The previous report showed 84,592 underserved locations; an improvement of 2,797 locations. This increase is likely due to a change in the way cable companies have reported service and not due to expansion of cable service. Information showing the number of locations that are served and underserved on a town and county basis is included in Appendix 4 and depicted as a map in Appendix 2.

A very high level attempt has been made to identify the cost to deploy networks that can provide broadband with speeds of 25/3 Mbps based on estimate information received during the three Connectivity Grant rounds that have occurred. The average cost is approximately \$2,800 per site, which means, for 81,795 locations, the cost would be upwards of \$230 million.

Areas served at 100 Mbps down and 100 Mbps upload speed

As of June 30th, 2017, based on information provided to the Department (DPS) by Internet service providers, the data indicates that of the 303,835 business and residential locations (E911 building locations) in the state, broadband service of 100/100 Mbps is presently available from a service provider for only 40,838 locations. Another 262,997 do not have this access. The previous report showed 39,364 served locations; an improvement of 1,474 locations. Information showing the number of locations that are served and underserved on a town and county basis is included in Appendix 4 and depicted as a map in Appendix 2.

A very high-level attempt has been made to identify the cost of deploying networks that can provide broadband with speeds of 100/100 Mbps. The average cost is approximately \$2,300 per site which means, for 262,997 locations, the cost would be upwards of \$600 million. This

² Previous reports listed a total of 304,875 locations. The difference/reduction of 1040 locations is due to changes in which categories of locations are considered “buildings”.

estimate is based on average cost per location of all proposals submitted during the past three Connectivity Initiative grant rounds.

Wireless Communications

Information in this section is drawn from deployment data reported to the FCC by facilities-based providers of mobile wireless service. In response to inquiries for broadband availability information, most providers have directed the Department to use information they submit to the FCC on Form 477. The Department has not prepared or modified the coverage information and makes no guarantee as to its accuracy. The data is publicly available on the FCC website in GIS format at this website: <https://www.fcc.gov/mobile-deployment-form-477-data>

The instructions for the FCC form 477 direct mobile wireless service providers to submit maps representing the geographic extent of service deployment. All maps should be prepared with a precision of 100 meters. This means that a single pixel represents 2.5 acres (a square 328 feet per side) and depicts either the presence or lack of coverage throughout that area. Providers are directed to submit separate maps for each different technology employed for both voice and broadband. The Department aggregated this coverage information to create two maps for each provider representing voice and broadband deployment. Where a provider submitted separate coverage areas for different technologies employed, these are depicted on the same map in different colors. Where coverage areas overlap, the technology with lesser coverage is laid over the technology with greater coverage. The data may not depict coverage offered through roaming arrangements with other providers.

For mobile voice deployment, the instructions direct providers to submit maps that reflect where users should expect to be able to make, maintain, and receive voice calls.

For mobile broadband deployment, the instructions direct providers to indicate the minimum advertised upload and download speeds, or if minimum speeds are not advertised, the minimum speeds consumers should expect to receive. The coverage area should depict the boundaries where, according to the providers, users should expect to receive those speeds. The FCC ruled that the speed information submitted with the Form 477 Mobile Broadband Deployment data is confidential and has thus withheld this information. The instructions state that broadband service, for these reporting purposes, must enable users to access the Internet with a speed exceeding 200 kbps in at least one direction. Therefore the coverage maps depict the availability of service of at least 200 kbps.

The table below relates the Technology Codes used in FCC form 477 and the associated technology used for the provision of service.

| Code | Description | Common name | Service type |
|------|-----------------|-------------|-------------------|
| 80 | WCDMA/UMTS/HSPA | 3 G | Voice & Broadband |
| 81 | HSPA+ | 3.5 G | Voice & Broadband |
| 82 | EVDO/EVDO RevA | 3.5 G | Voice & Broadband |
| 83 | LTE | 4 G | Voice & Broadband |
| 85 | CDMA | 2 G | Voice |
| 86 | GSM | 2 G | Voice |

The complete FCC Form 477 instructions are posted on the FCC website at this website: <https://transition.fcc.gov/form477/477inst.pdf>

BROADBAND ACTION PLAN

January 15, 2018

The State of Vermont is committed to ensuring that all Vermonters have the best available high-speed Internet access. The intent of Vermont's telecommunications planning and policy law is to "support measures designed to ensure that by the end of the year 2024 every E-911 business and residential location in Vermont has infrastructure capable of delivering Internet access with service that has a minimum download speed of 100 Mbps and is symmetrical."¹ To that end, the Department of Public Service ("Department") is directed to promote "access to affordable broadband service to all residences and businesses in all regions of the State."² Legislation directs the Department to start with those locations that lack service of 4/1 Mbps or better, and provide each with access at 10/1 Mbps³. This Action Plan, prepared pursuant to state law⁴, offers a strategy to advance these goals.

Fiber to the premises (FTTP) is widely understood to be the best technology for reaching the 2024 goal, but other technologies, including hybrid fiber coax (HFC) cable service (CableLabs DOCSIS 3.1 standard), DSL (ITU VDSL2 standard), and even mobile wireless (3GPP 5G standard) are also capable of meeting these requirements. Because HFC cable service is widely available in the state, existing cable networks should be considered as an important element in the state's overall broadband strategy.

Broadband affordability remains a challenge. Communities that can afford to tackle broadband expansion will succeed in improving service. But many communities cannot afford the capital costs of infrastructure deployment. Furthermore, many would-be consumers in low income towns cannot afford the retail rate for the service itself. The FCC has taken steps to address low-income accessibility, such as expanding the popular lifeline program to wireless carriers and broadband providers. Some carriers also offer low-income packages. Yet, where families have access to only one carrier, these programs may not be available. Affordability is a criterion for the Department to weigh when awarding grants.

New models for broadband development

Vermont has seen significant improvement in broadband availability but much work remains. State and federal funding constraints on broadband investment are limiting the current approach and new models for broadband deployment are needed. State policy must strengthen the connection between the demand for rural broadband and the Vermont-based industries that are likely to benefit from broadband deployment. With the increase of Internet of Things (IoT) ready appliances and services, broadband access will be necessary to support the basic functions of most households, and these services will be delivered by edge providers over broadband capable networks. Electric companies will manage load with micro load control systems. Health care will be delivered by the Internet, allowing patients the opportunity to heal in their own homes. Intelligent Transportation Systems (ITS) will make our highways safer and reduce carbon emissions. Educational opportunities will also be extended with broadband, allowing children access to globally available learning platforms. Without broadband, these innovations will not be possible.

The State should explore ways to leverage public-private partnerships in healthcare, education, transportation, and energy sectors in support of broadband expansion. The Department will work with other state agencies, including Agency of Transportation, Agency Commerce & Community

Development, Department of Health, Agency of Education, and other stakeholders to realize our shared futures.

Objectives

Vermont legislation refers to the minimum technical service characteristic objectives of broadband service (“Objectives”) to serve two specific purposes: a.) locations lacking services at these speeds will be eligible for State support⁵, and b.) grantees accepting State support will be obligated to provide services at these speeds.⁶ Vermont legislation directs the Department to define the Objectives in the Vermont Telecommunications Plan⁷. The 2014 Vermont Telecommunications Plan set the Objectives at 4 Mbps down and 1 Mbps up. After the goal of universal availability of at least 4/1 Mbps is met, the focus will be directed toward furtherance of the goal of ensuring universal availability at 100/100 Mbps. This will be accomplished through the establishment of interim speed tier Objectives in the Telecommunications Plan, listed below.⁸

- 2014 - 2017: 4/1 Mbps
- 2017 - 2020: 10/1 Mbps
- 2020 - 2024: 100/100 Mbps

Coordination with FCC

The Federal Communication Commissions (“FCC”) policies dictate separate approaches for two types of areas: completely unserved areas and partially served areas.⁹ The FCC Connect America Fund (CAF) Phase II program is focused exclusively on completely unserved areas. The program defined areas eligible for support as census blocks where no location had access to service at 4/1 Mbps from a provider other than the incumbent local telephone company. The program will, by 2021, bring broadband Internet access at 10/1 Mbps service to the majority of locations in these completely unserved areas.¹⁰ The State of Vermont’s Connectivity Fund¹¹, (including the High-Cost Program and the Connectivity Initiative) supported by the Vermont Universal Service Fund, will be directed to bring service to locations not served by the CAF II program. These are areas with locations that lack access to services at 4/1 Mbps or better but that are excluded from the CAF II program because they are in partially served areas or areas in which CAF II providers have chosen not to serve. The Department will work with the Public Utilities Commission (“PUC”) to ensure that support from the High Cost Program is directed to these locations.

Town-based approach to the Connectivity Initiative

State funding alone is insufficient to achieve Vermont’s 2024 goal at this time. Therefore, the Department will develop, with advice from the Connectivity Advisory Board, a process for leveraging state investment with municipal and private investments in existing broadband networks. The Department believes that Vermont’s Public Utility Commission’s cable line extension rule is a proven process for rationally allocating costs between service providers and consumers.¹² To ensure that cable operators are able to recover the capital investment required for line extensions, the rule employs a formula to apportion capital costs between the cable provider and affected cable subscribers on a sliding scale based on subscriber density. This formula can also be used to apportion costs of broadband deployment between service providers and subscribers. In addition, to add further incentive to deployment, the subscriber portion of the capital cost can be shared by the State and regional stakeholders, and the individual subscribers. These stakeholders could include municipalities, educational institutions, healthcare service providers, electric utilities, and other organizations

Under this plan, the Department will solicit requests for broadband service from towns, neighborhoods and other private groups. The Department will work with the Vermont League of Cities and Towns, the Agency of Commerce and Community Development, and the Regional Planning Commissions to ensure

notice of this opportunity is provided to towns and that towns have an effective means to participate. The Department will identify all underserved locations through its broadband mapping system and will publish this information in the Connectivity Division annual report. Upon a formal stakeholder request, Department staff will visit the stakeholders and present broadband availability information and explain the funding process. The Department will provide a rough estimate of the cost to deploy services throughout the requested areas with an assumed take rate, using the cable line extension rule as a guide. If the petitioning stakeholder group pledges to fund some of the customer portion of the estimated capital cost, the Department will conduct a request for proposals, subject to available Connectivity Initiative funding. After receipt of a qualifying proposal, the stakeholder will be required to canvas the residents of the proposed service area and obtain signed contracts from potential customers. The final customer portion of the capital cost, as calculated under the PUC rule, will be split between the Connectivity Initiative, the stakeholder, and the individual subscribers. The Department will explore whether a process could be developed for resolving future requests for service by residents who did not participate in the initial funding of the project.

The Department will also work to reform its Request for Proposals (RFP) process. As the Department revamps its RFP process, it should provide greater weight and consideration to affordability, through the cost of equipment, price of the service and any other factor that may impact the final price of the service. Consideration should also be given to economic factors of the area receiving publicly funded resources. The Department will also ensure that clear expectations for towns and carriers is provided in the RFP.

¹ 30 V.S.A. § 202(c)(10)

² 30 V.S.A § 202e(a)(1)

³ 30 V.S.A § 7515b(a)

⁴ 30 V.S.A § 202e(b)(6)

⁵ 30 V.S.A § 7515b(a)

⁶ 30 V.S.A § 202(e)

⁷ 30 V.S.A § 202d(g)

⁸ 2014 Vermont Telecommunications Plan, page 89

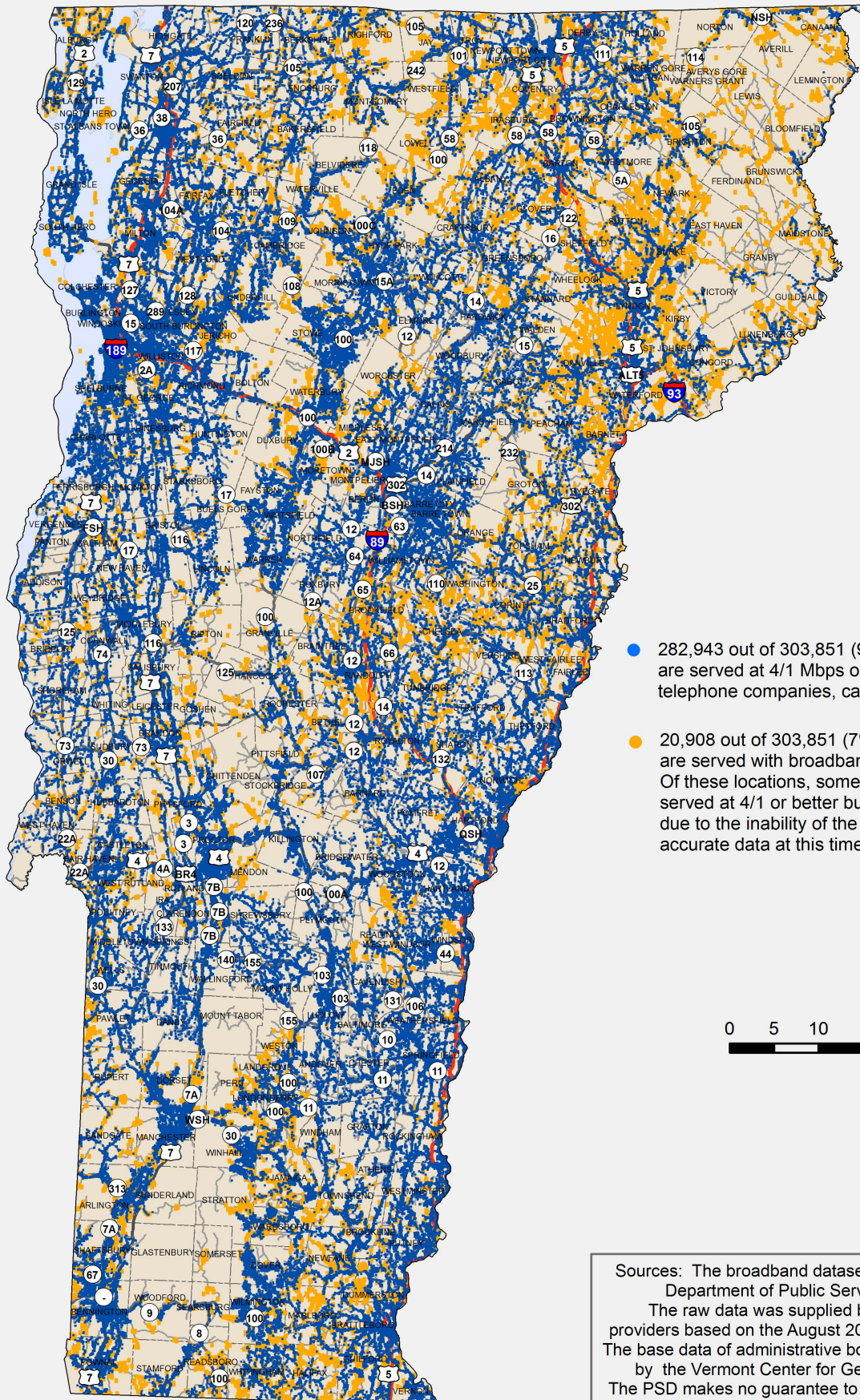
⁹ The Department believes that many potentially underserved locations have access to 4/1 Mbps service from wireless providers. However, while most wireless service providers submit coverage maps depicting service availability, only one affirmatively asserts the availability of service at 4/1 Mbps.

¹⁰ On August 19, 2015 FairPoint accepted the CAF II award of \$8,789,359 per year for six years from the FCC, and is required to offer services supporting 10 Mbps download speed and 1 Mbps upload speed to 28,399 supported locations within 6 years of the award. Through GIS analysis the PSD identified approximately 45,833 business and residential locations in the FairPoint service territory within the eligible census blocks.

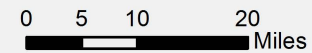
¹¹ 30 V.S.A § 7516

¹² PUC Rule 8.313

Broadband Availability by E911 Building Location 4 Mbps Down / 1 Mbps Up or Better

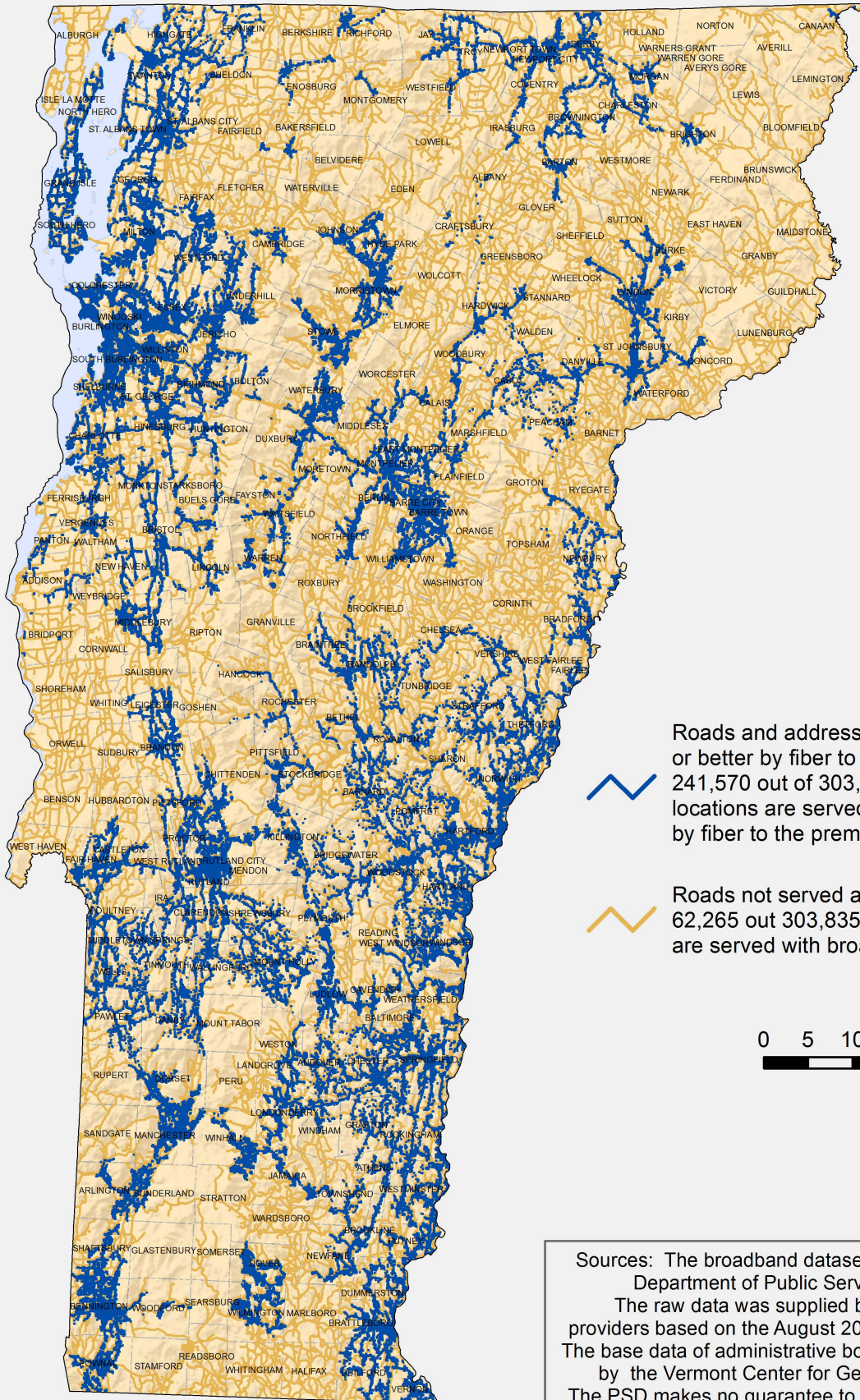


- 282,943 out of 303,851 (93%) E911 building locations are served at 4/1 Mbps or better by independent telephone companies, cable, or fiber to the premises.
- 20,908 out of 303,851 (7%) E911 building locations are served with broadband less than 4/1 Mbps. Of these locations, some number are already served at 4/1 or better but this cannot be verified due to the inability of the companies to provide accurate data at this time.



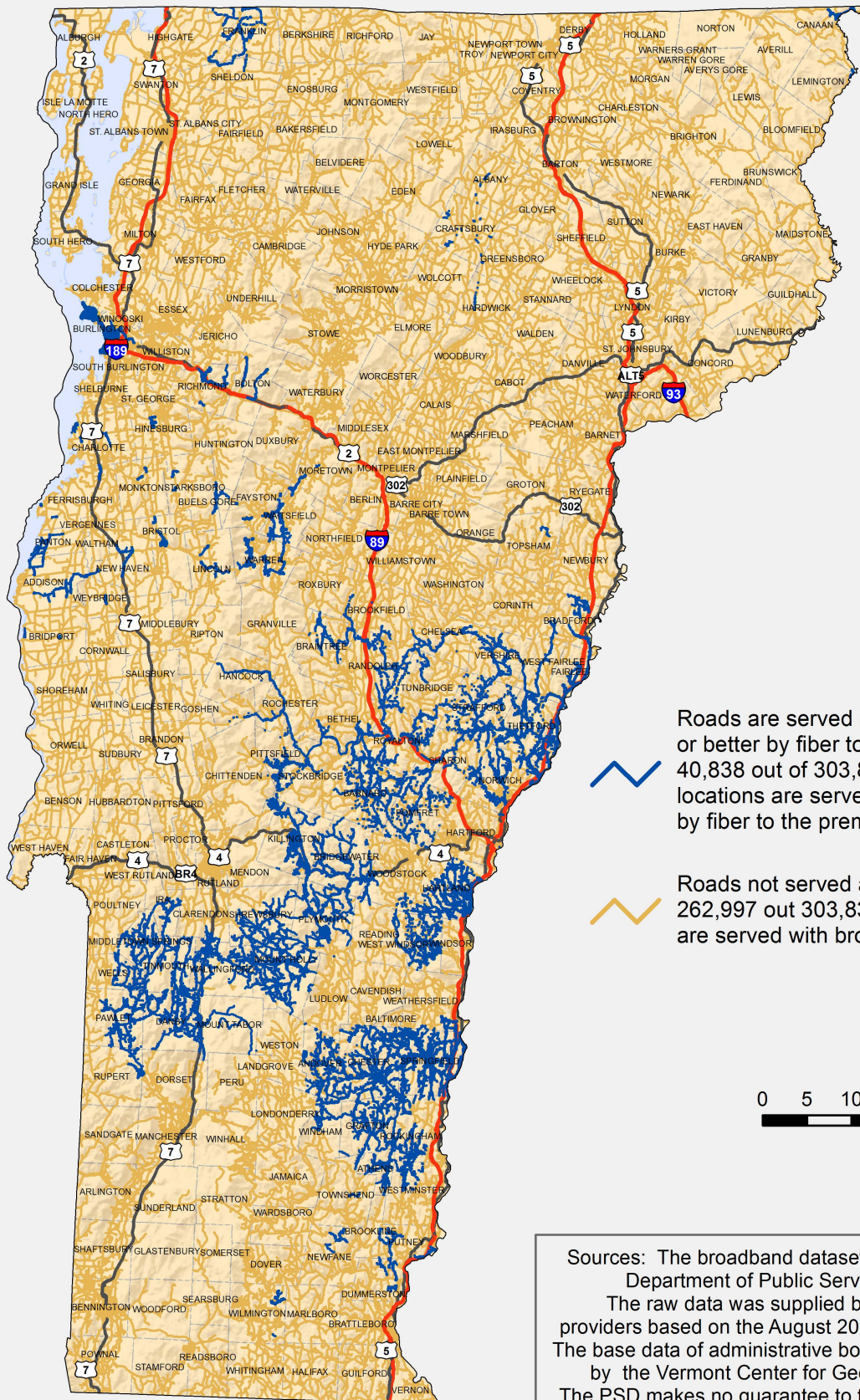
Sources: The broadband dataset was prepared by the Vermont Department of Public Service (PSD) on 1/3/2018. The raw data was supplied by Vermont internet service providers based on the August 2017 PSD request for information. The base data of administrative boundaries and roads are supplied by the Vermont Center for Geographic Information (VCGI). The PSD makes no guarantee to the accuracy of this information.


Broadband Availability by Road Segment 25 Mbps Down / 3 Mbps Up or Better




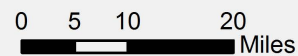
Sources: The broadband dataset was prepared by the Vermont Department of Public Service (PSD) on 1/3/2018. The raw data was supplied by Vermont internet service providers based on the August 2017 PSD request for information. The base data of administrative boundaries and roads are supplied by the Vermont Center for Geographic Information (VCGI). The PSD makes no guarantee to the accuracy of this information.

Broadband Availability by Road Segment 100 Mbps Down / 100 Mbps Up or Better



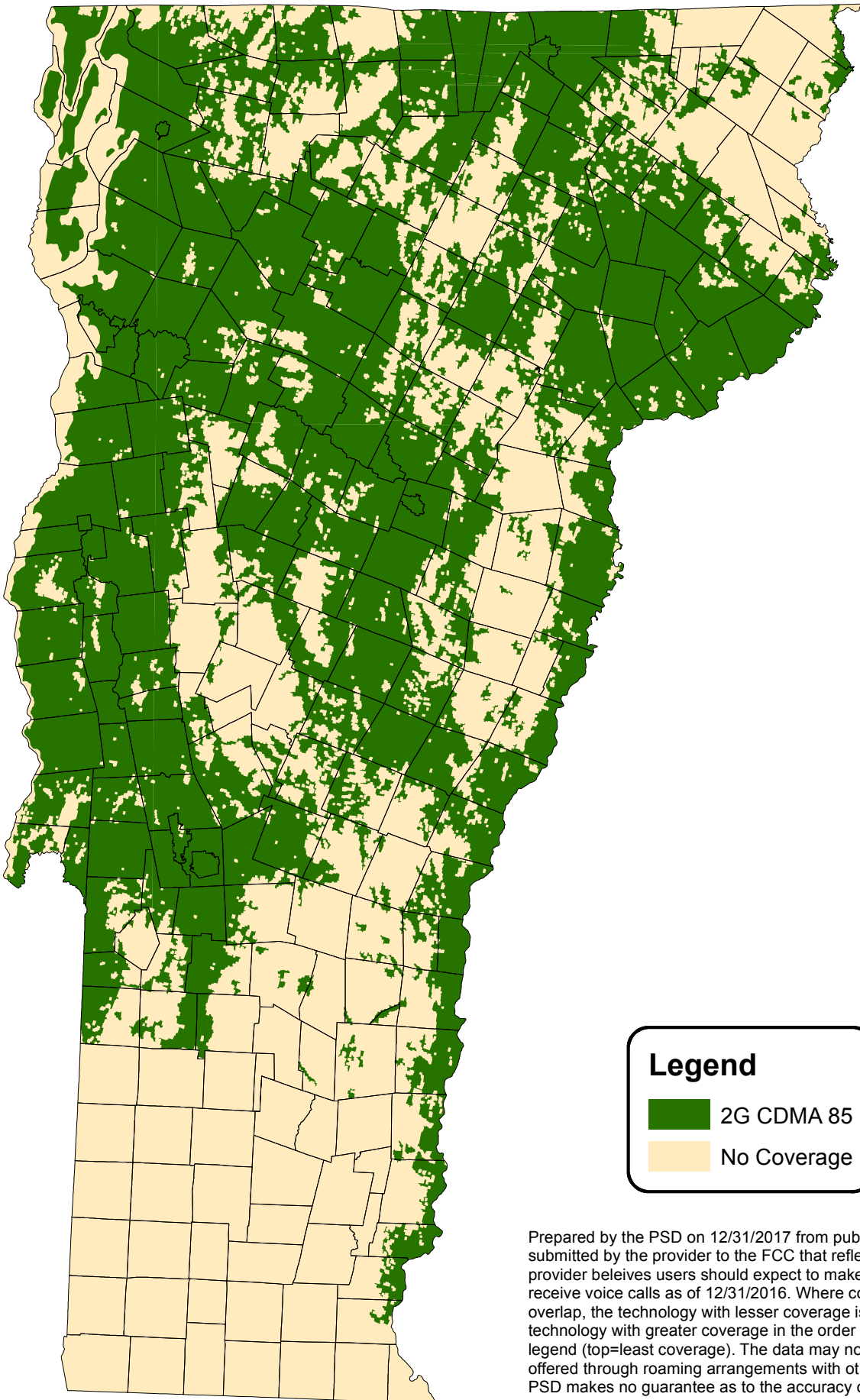
 Roads are served at 100/100 Mbps or better by fiber to the premises or cable. 40,838 out of 303,835 (13.4%) building locations are served at 100/100 Mbps or better by fiber to the premises or cable.

 Roads not served at 100/100 Mbps or better. 262,997 out of 303,835 (86.6%) building locations are served with broadband less than 100/100.



Sources: The broadband dataset was prepared by the Vermont Department of Public Service (PSD) on 1/3/2018. The raw data was supplied by Vermont internet service providers based on the August 2017 PSD request for information. The base data of administrative boundaries and roads are supplied by the Vermont Center for Geographic Information (VCGI). The PSD makes no guarantee to the accuracy of this information.

Verizon Voice

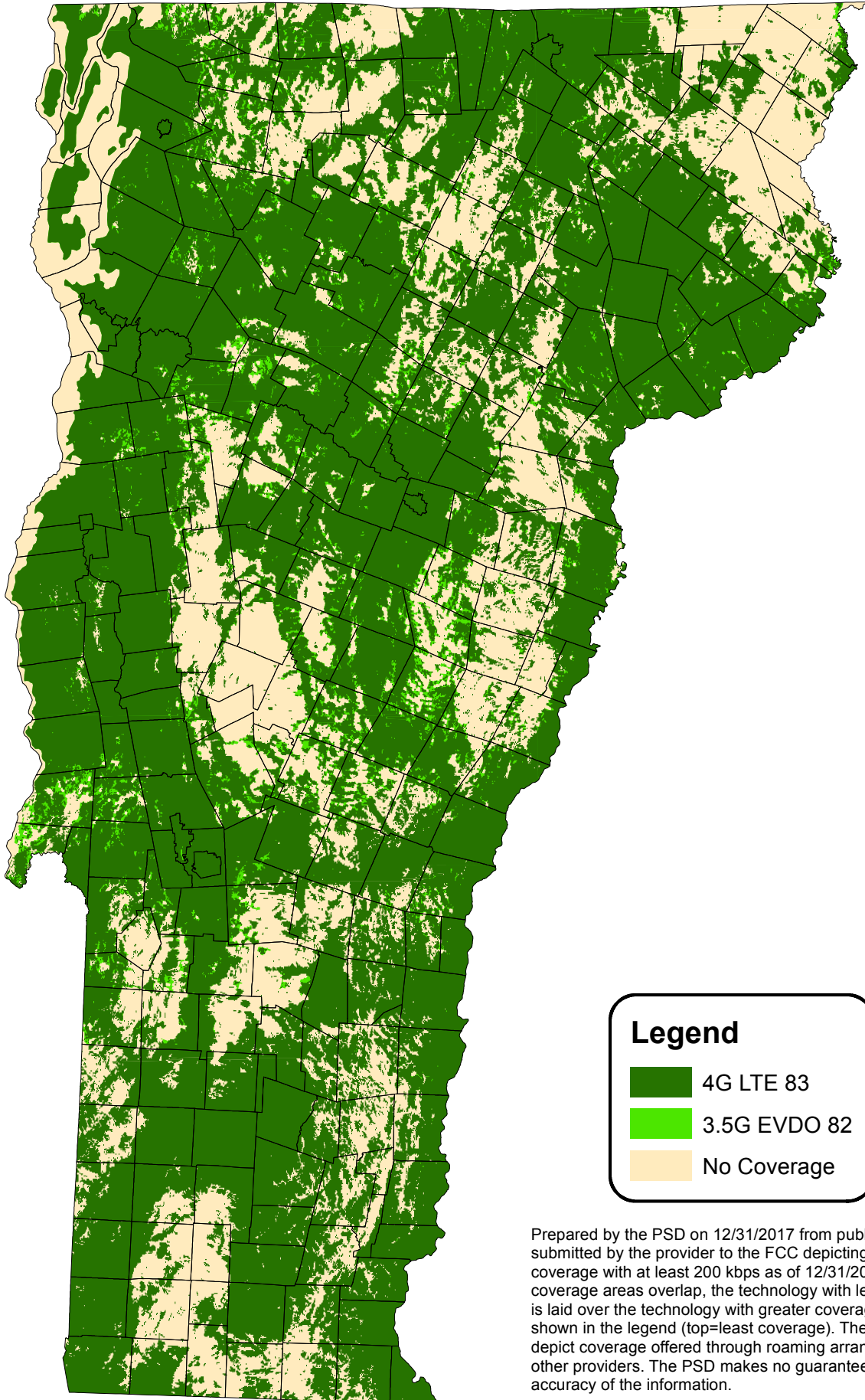


Legend

- 2G CDMA 85
- No Coverage

Prepared by the PSD on 12/31/2017 from public information submitted by the provider to the FCC that reflects where the provider believes users should expect to make, maintain, and receive voice calls as of 12/31/2016. Where coverage areas overlap, the technology with lesser coverage is laid over the technology with greater coverage in the order shown in the legend (top=least coverage). The data may not depict coverage offered through roaming arrangements with other providers. The PSD makes no guarantee as to the accuracy of the information.

Verizon Broadband

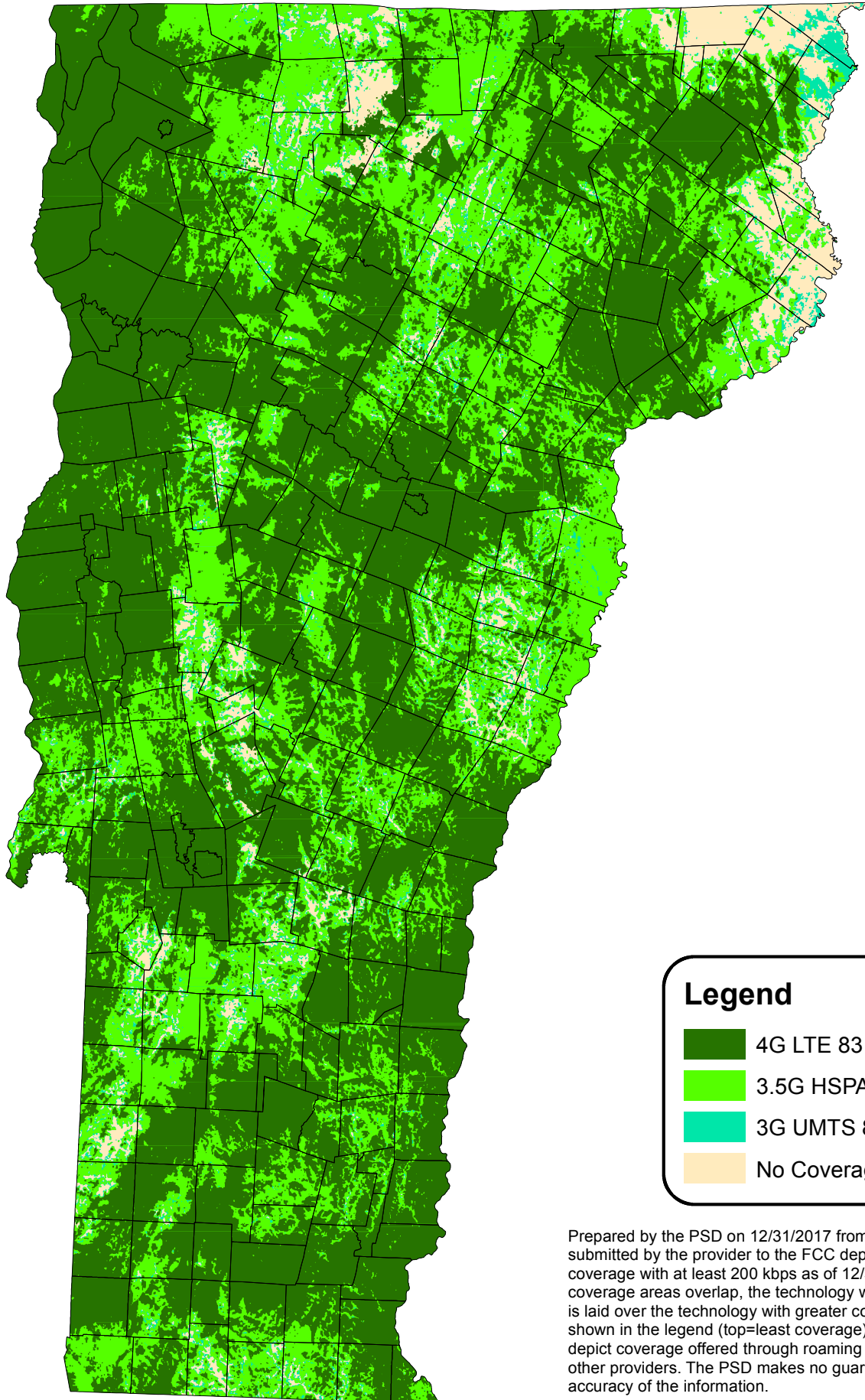


Legend

- 4G LTE 83
- 3.5G EVDO 82
- No Coverage

Prepared by the PSD on 12/31/2017 from public information submitted by the provider to the FCC depicting broadband coverage with at least 200 kbps as of 12/31/2016. Where coverage areas overlap, the technology with lesser coverage is laid over the technology with greater coverage in the order shown in the legend (top=least coverage). The data may not depict coverage offered through roaming arrangements with other providers. The PSD makes no guarantee as to the accuracy of the information.

AT&T Broadband

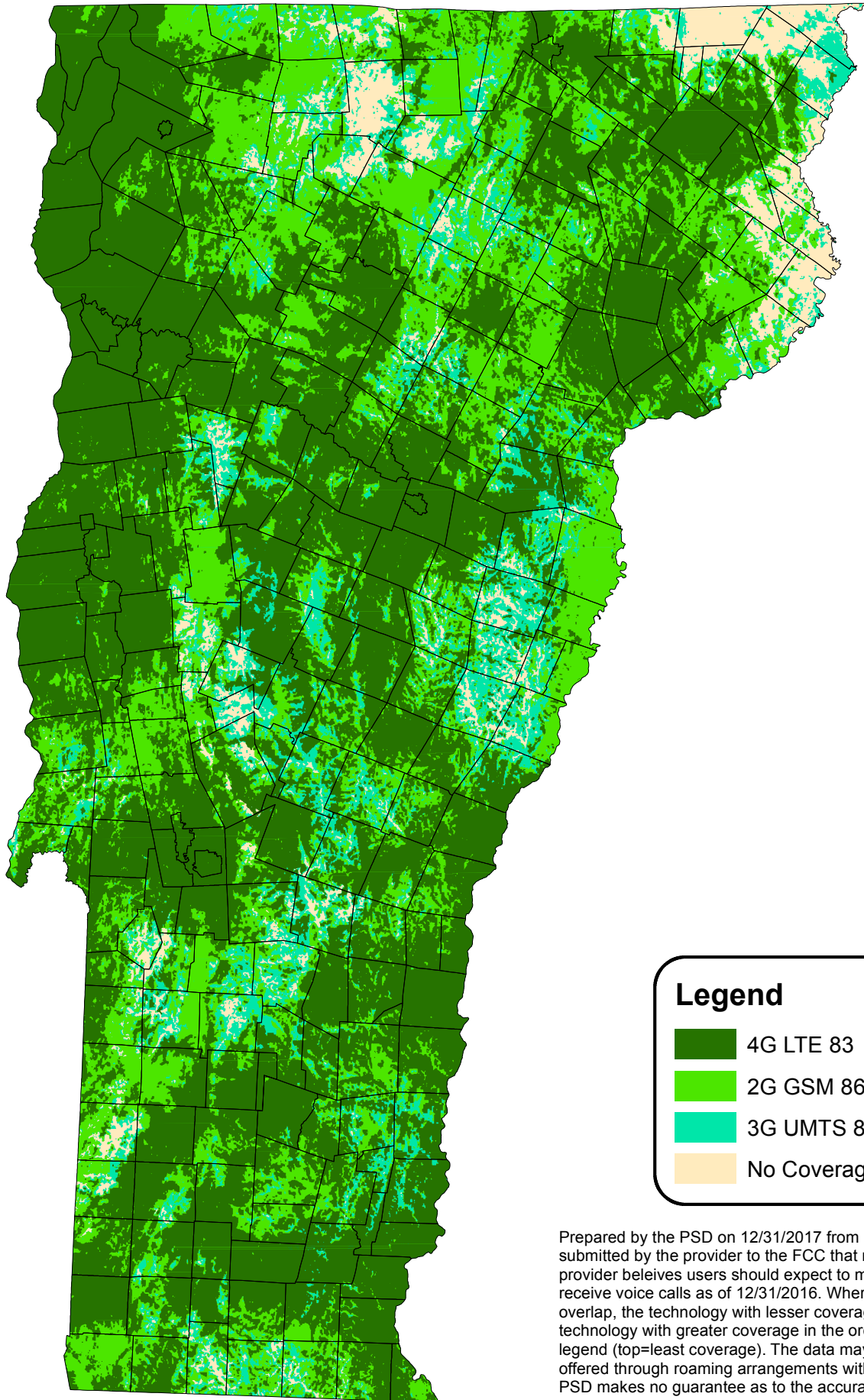


Legend

- 4G LTE 83
- 3.5G HSPA+ 81
- 3G UMTS 80
- No Coverage

Prepared by the PSD on 12/31/2017 from public information submitted by the provider to the FCC depicting broadband coverage with at least 200 kbps as of 12/31/2016. Where coverage areas overlap, the technology with lesser coverage is laid over the technology with greater coverage in the order shown in the legend (top=least coverage). The data may not depict coverage offered through roaming arrangements with other providers. The PSD makes no guarantee as to the accuracy of the information.

AT&T Voice

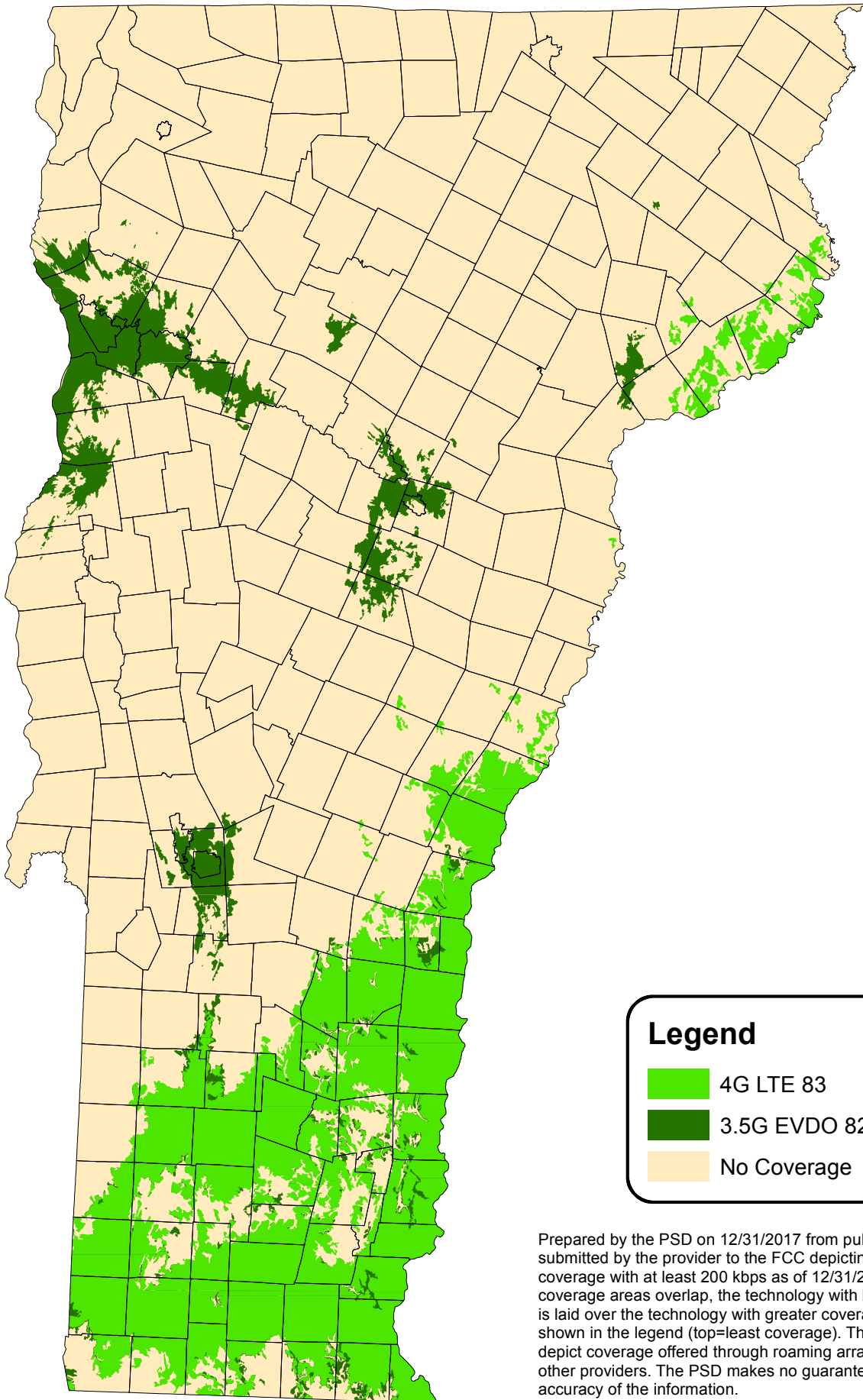


Legend




- Dark Green: 4G LTE 83
- Medium Green: 2G GSM 86
- Light Green: 3G UMTS 80
- Orange: No Coverage

Prepared by the PSD on 12/31/2017 from public information submitted by the provider to the FCC that reflects where the provider believes users should expect to make, maintain, and receive voice calls as of 12/31/2016. Where coverage areas overlap, the technology with lesser coverage is laid over the technology with greater coverage in the order shown in the legend (top=least coverage). The data may not depict coverage offered through roaming arrangements with other providers. The PSD makes no guarantee as to the accuracy of the information.

US Cellular Broadband

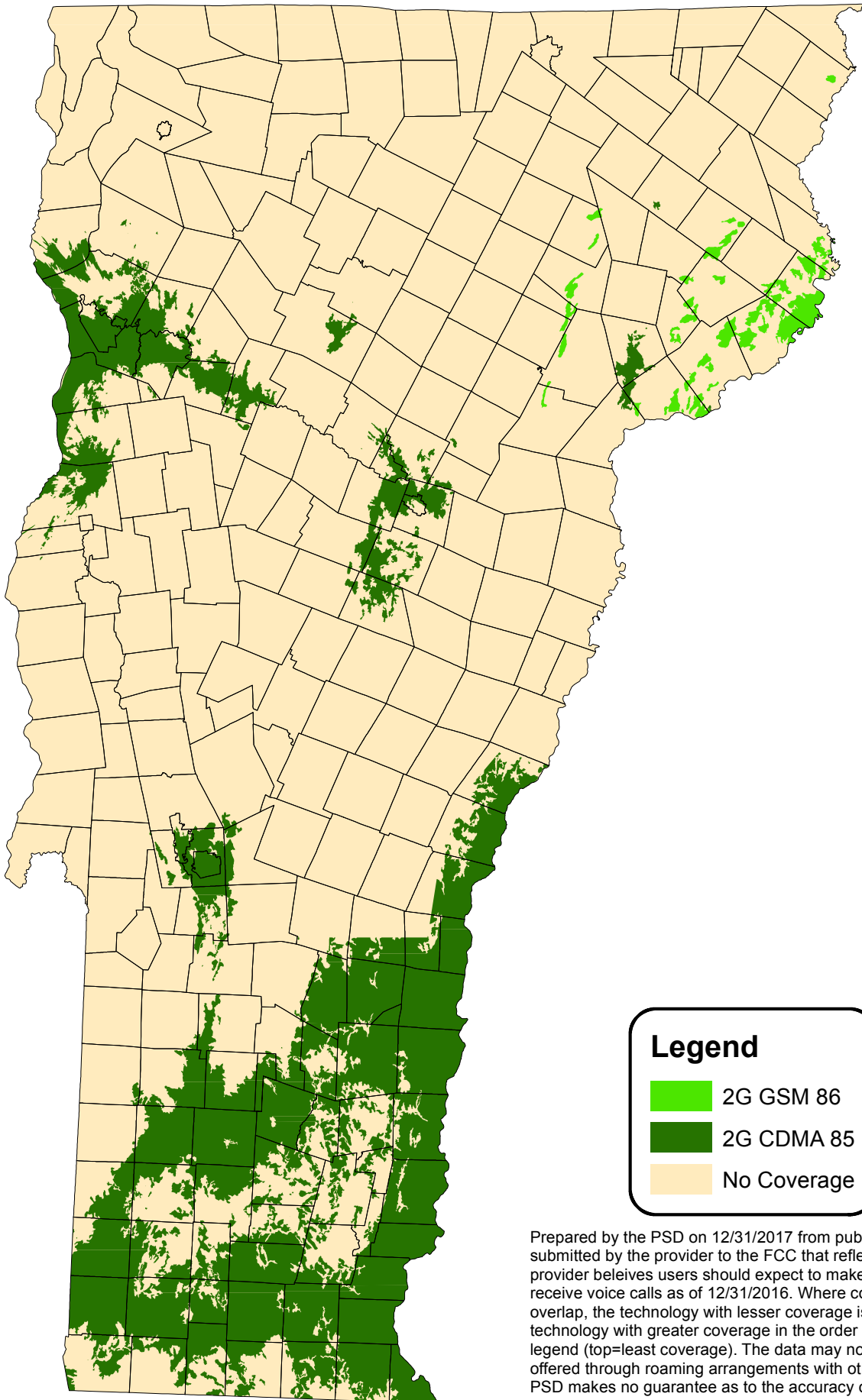


Legend




-  4G LTE 83
-  3.5G EVDO 82
-  No Coverage

Prepared by the PSD on 12/31/2017 from public information submitted by the provider to the FCC depicting broadband coverage with at least 200 kbps as of 12/31/2016. Where coverage areas overlap, the technology with lesser coverage is laid over the technology with greater coverage in the order shown in the legend (top=least coverage). The data may not depict coverage offered through roaming arrangements with other providers. The PSD makes no guarantee as to the accuracy of the information.

US Cellular Voice

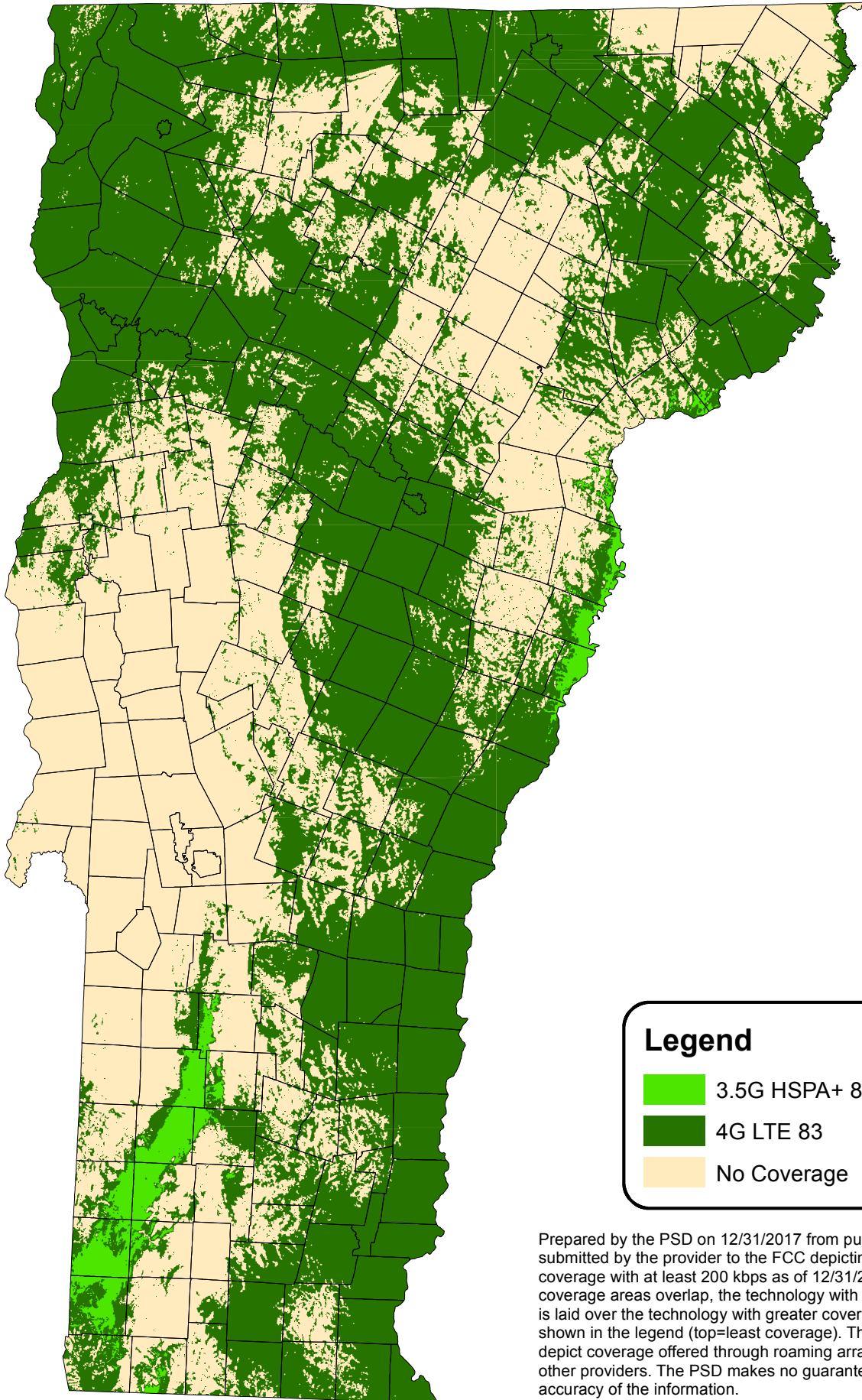


Legend




-  2G GSM 86
-  2G CDMA 85
-  No Coverage

Prepared by the PSD on 12/31/2017 from public information submitted by the provider to the FCC that reflects where the provider believes users should expect to make, maintain, and receive voice calls as of 12/31/2016. Where coverage areas overlap, the technology with lesser coverage is laid over the technology with greater coverage in the order shown in the legend (top=least coverage). The data may not depict coverage offered through roaming arrangements with other providers. The PSD makes no guarantee as to the accuracy of the information.

T-Mobile Broadband

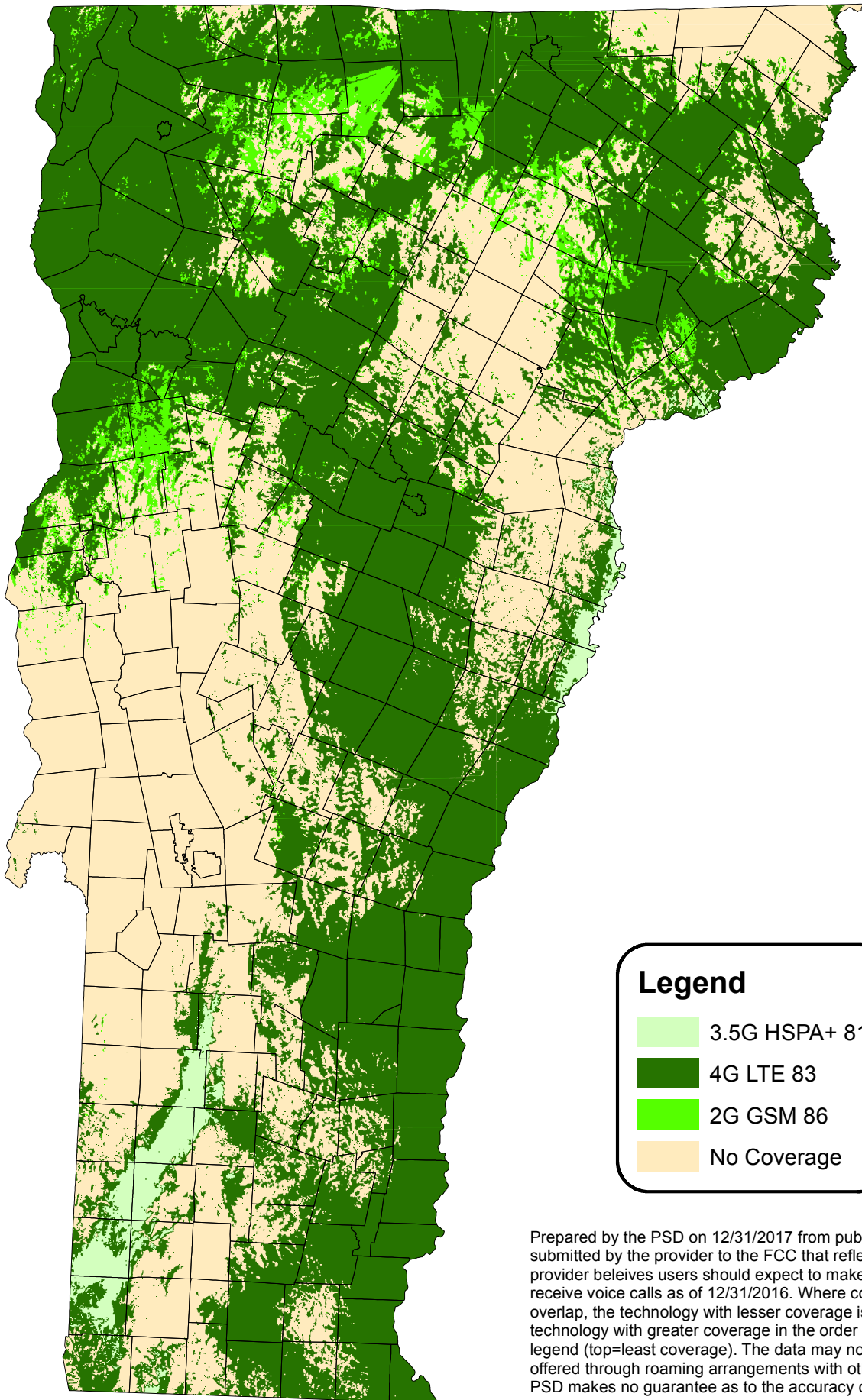


Legend

-  3.5G HSPA+ 81
-  4G LTE 83
-  No Coverage

Prepared by the PSD on 12/31/2017 from public information submitted by the provider to the FCC depicting broadband coverage with at least 200 kbps as of 12/31/2016. Where coverage areas overlap, the technology with lesser coverage is laid over the technology with greater coverage in the order shown in the legend (top=least coverage). The data may not depict coverage offered through roaming arrangements with other providers. The PSD makes no guarantee as to the accuracy of the information.

T-Mobile Voice

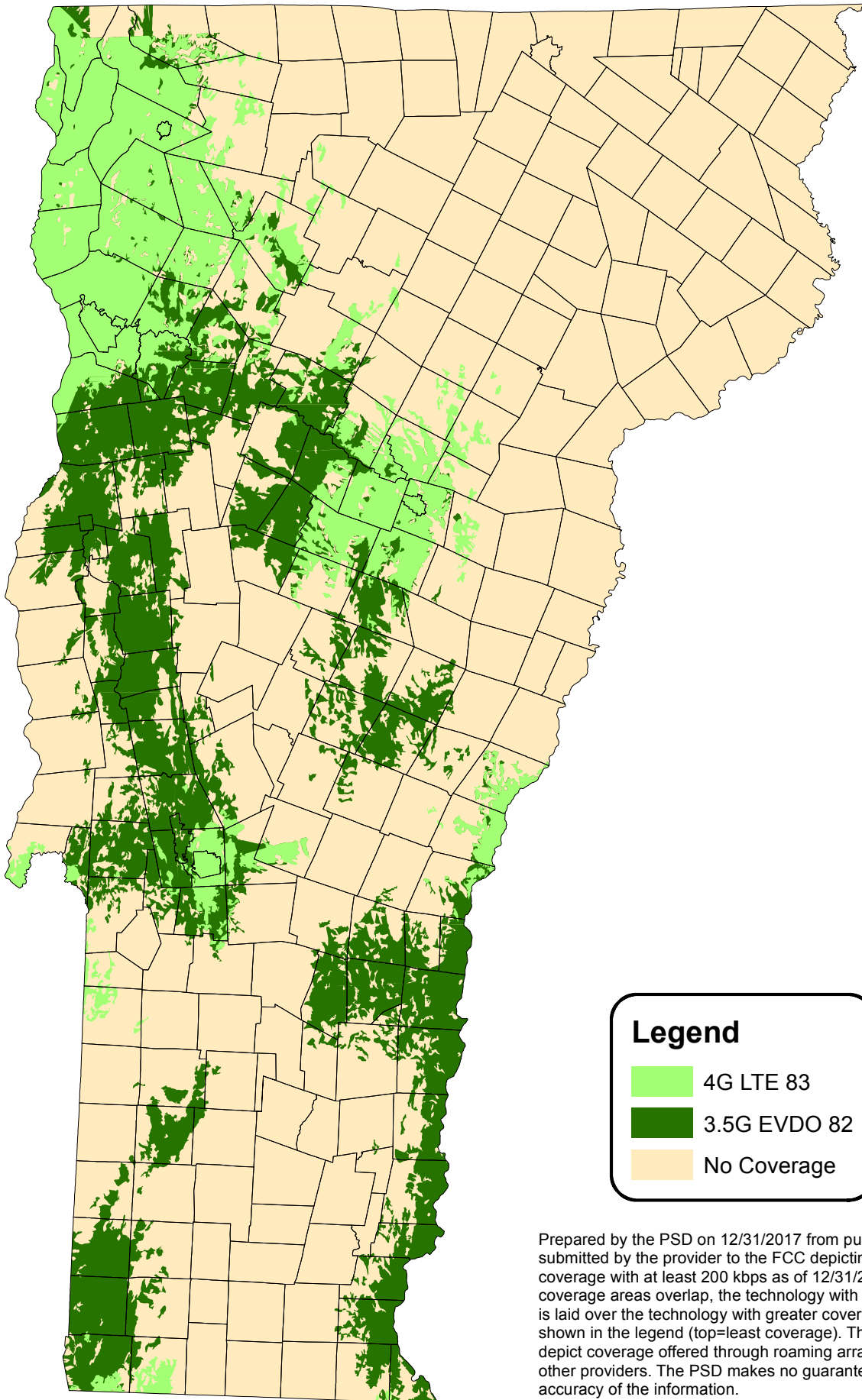


Legend

- 3.5G HSPA+ 81
- 4G LTE 83
- 2G GSM 86
- No Coverage

Prepared by the PSD on 12/31/2017 from public information submitted by the provider to the FCC that reflects where the provider believes users should expect to make, maintain, and receive voice calls as of 12/31/2016. Where coverage areas overlap, the technology with lesser coverage is laid over the technology with greater coverage in the order shown in the legend (top=least coverage). The data may not depict coverage offered through roaming arrangements with other providers. The PSD makes no guarantee as to the accuracy of the information.

Sprint Broadband

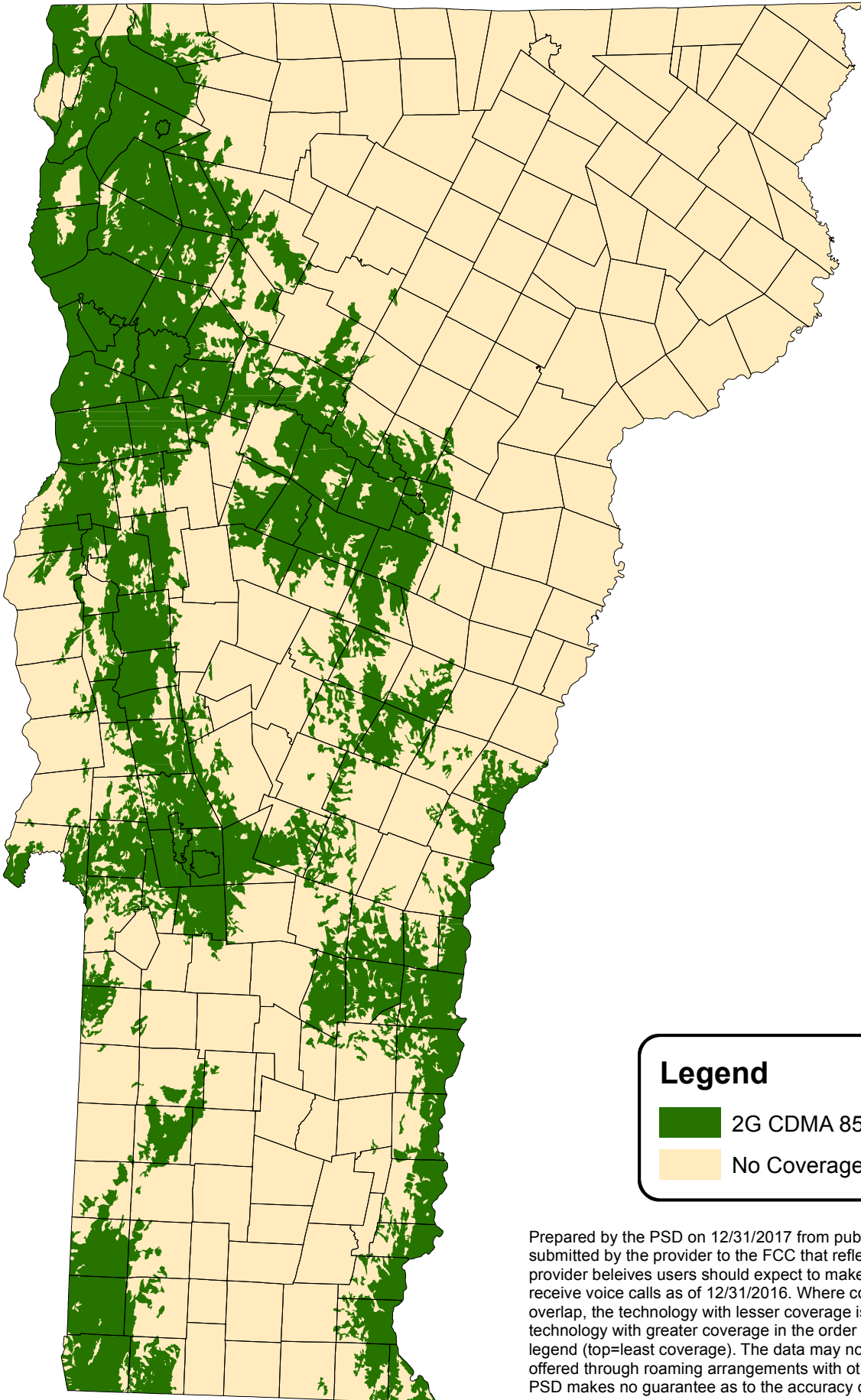


Legend

- 4G LTE 83
- 3.5G EVDO 82
- No Coverage

Prepared by the PSD on 12/31/2017 from public information submitted by the provider to the FCC depicting broadband coverage with at least 200 kbps as of 12/31/2016. Where coverage areas overlap, the technology with lesser coverage is laid over the technology with greater coverage in the order shown in the legend (top=least coverage). The data may not depict coverage offered through roaming arrangements with other providers. The PSD makes no guarantee as to the accuracy of the information.

Sprint Voice

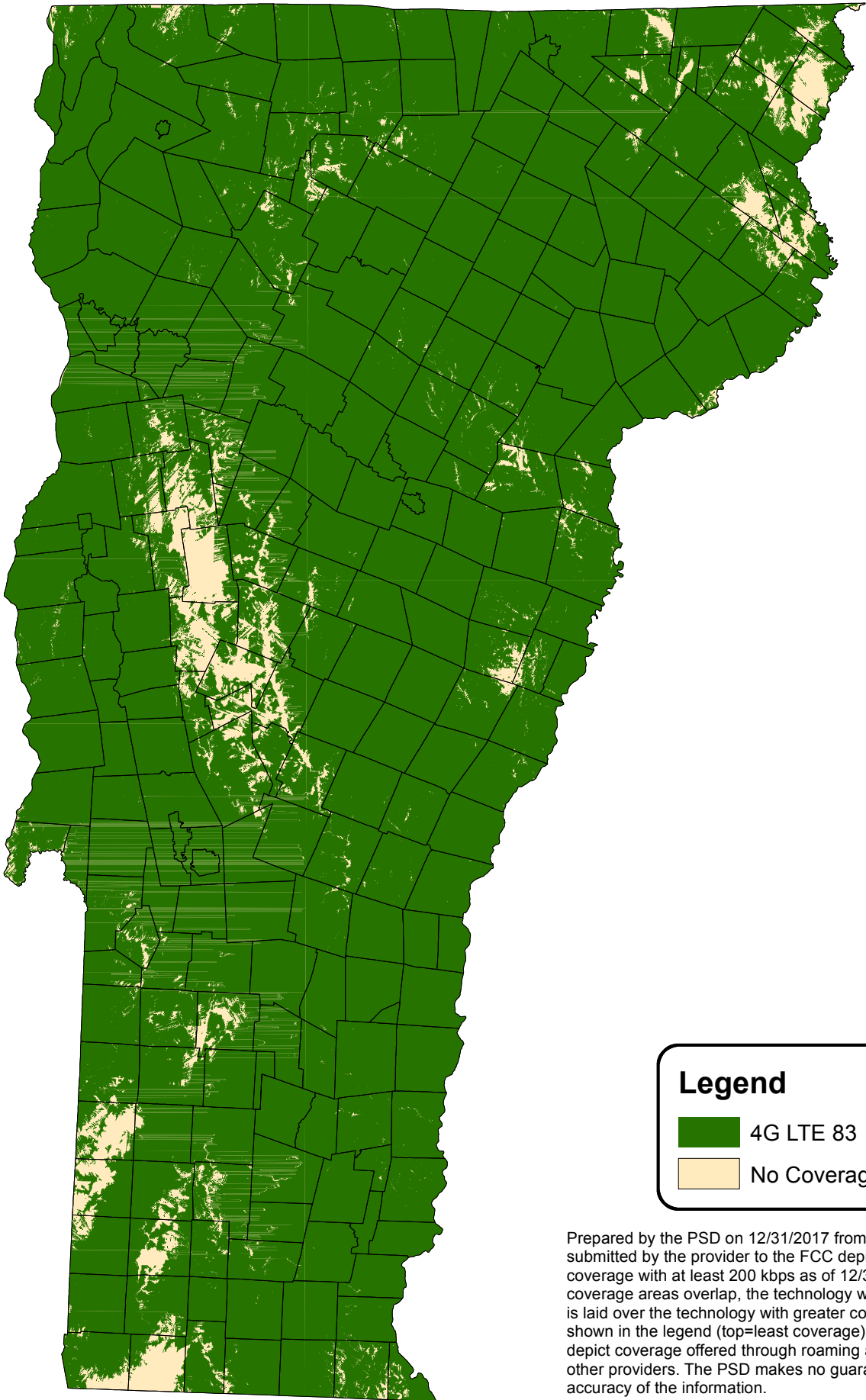


Legend

- 2G CDMA 85
- No Coverage

Prepared by the PSD on 12/31/2017 from public information submitted by the provider to the FCC that reflects where the provider believes users should expect to make, maintain, and receive voice calls as of 12/31/2016. Where coverage areas overlap, the technology with lesser coverage is laid over the technology with greater coverage in the order shown in the legend (top=least coverage). The data may not depict coverage offered through roaming arrangements with other providers. The PSD makes no guarantee as to the accuracy of the information.

VTel Wireless Broadband



Legend

- 4G LTE 83
- No Coverage

Prepared by the PSD on 12/31/2017 from public information submitted by the provider to the FCC depicting broadband coverage with at least 200 kbps as of 12/31/2016. Where coverage areas overlap, the technology with lesser coverage is laid over the technology with greater coverage in the order shown in the legend (top=least coverage). The data may not depict coverage offered through roaming arrangements with other providers. The PSD makes no guarantee as to the accuracy of the information.

Broadband Statistics Summary by Town as of January 11, 2018

| County | Town | Total Buildings | Served locations are affirmatively reported as served by specific providers | | | | | | | | Underserved locations are potentially served at 4/1 by FairPoint | | | | | |
|---------------|------|-----------------|---|----------------------------------|-----------------------|-------------------------------|-----------------------|-------------------------------|----------------------|------------------------------|--|---------------------|--------------------------|----------------------------------|----------------------|------------------------------|
| | | | Served 100/100 or Better | Percent Served 100/100 or Better | Served 25/3 or Better | Percent Served 25/3 or Better | Served 10/1 or Better | Percent Served 10/1 or Better | Served 4/1 or Better | Percent Served 4/1 or Better | Underserved | Percent Underserved | Underserved in VTEL_ARRA | Percent Underserved in VTEL_ARRA | Underserved in CAFII | Percent Underserved in CAFII |
| ADDISON | | 17,661 | 1,418 | 8.0% | 9,508 | 53.8% | 10,450 | 59.2% | 16,808 | 95.2% | 853 | 4.8% | 314 | 1.8% | 262 | 1.5% |
| BENNINGTON | | 20,336 | 120 | 0.6% | 16,403 | 80.7% | 17,671 | 86.9% | 19,115 | 94.0% | 1,221 | 6.0% | 690 | 3.4% | 406 | 2.0% |
| CALEDONIA | | 15,754 | 16 | 0.1% | 8,062 | 51.2% | 10,249 | 65.1% | 12,539 | 79.6% | 3,215 | 20.4% | 2,276 | 14.4% | 1,673 | 10.6% |
| CHITTENDEN | | 56,836 | 11,640 | 20.5% | 53,082 | 93.4% | 53,408 | 94.0% | 55,929 | 98.4% | 907 | 1.6% | 0 | 0.0% | 51 | 0.1% |
| ESSEX | | 5,348 | 309 | 5.8% | 1,163 | 21.7% | 2,237 | 41.8% | 3,565 | 66.7% | 1,783 | 33.3% | 1,639 | 30.6% | 1,159 | 21.7% |
| FRANKLIN | | 22,252 | 535 | 2.4% | 15,121 | 68.0% | 17,347 | 78.0% | 20,743 | 93.2% | 1,509 | 6.8% | 592 | 2.7% | 726 | 3.3% |
| GRAND ISLE | | 6,168 | 0 | 0.0% | 3,648 | 59.1% | 4,534 | 73.5% | 4,846 | 78.6% | 1,322 | 21.4% | 0 | 0.0% | 705 | 11.4% |
| LAMOILLE | | 12,588 | 0 | 0.0% | 6,238 | 49.6% | 8,497 | 67.5% | 11,764 | 93.5% | 824 | 6.5% | 550 | 4.4% | 492 | 3.9% |
| ORANGE | | 15,394 | 4,073 | 26.5% | 8,509 | 55.3% | 9,984 | 64.9% | 13,490 | 87.6% | 1,904 | 12.4% | 744 | 4.8% | 951 | 6.2% |
| ORLEANS | | 16,350 | 85 | 0.5% | 8,269 | 50.6% | 10,389 | 63.5% | 13,839 | 84.6% | 2,511 | 15.4% | 1,781 | 10.9% | 1,147 | 7.0% |
| RUTLAND | | 30,585 | 6,640 | 21.7% | 27,349 | 89.4% | 27,642 | 90.4% | 29,779 | 97.4% | 806 | 2.6% | 307 | 1.0% | 183 | 0.6% |
| WASHINGTON | | 26,475 | 1,123 | 4.2% | 18,446 | 69.7% | 19,879 | 75.1% | 25,507 | 96.3% | 968 | 3.7% | 258 | 1.0% | 239 | 0.9% |
| WINDHAM | | 26,666 | 2,319 | 8.7% | 19,456 | 73.0% | 21,785 | 81.7% | 24,498 | 91.9% | 2,168 | 8.1% | 1,253 | 4.7% | 1,018 | 3.8% |
| WINDSOR | | 31,422 | 12,560 | 40.0% | 26,786 | 85.2% | 27,890 | 88.8% | 30,515 | 97.1% | 907 | 2.9% | 593 | 1.9% | 394 | 1.3% |
| TOTALS | | 303,835 | 40,838 | 13.4% | 222,040 | 73.1% | 241,962 | 79.6% | 282,937 | 93.1% | 20,898 | 6.9% | 10,997 | 3.6% | 9,406 | 3.1% |

Broadband Statistics Summary by Town as of January 11, 2018

| County | Town | Total Buildings | Served locations are affirmatively reported as served by specific providers | | | | | | | | Underserved locations are potentially served at 4/1 by FairPoint | | | | | |
|------------|---------------|-----------------|---|----------------------------------|-----------------------|-------------------------------|-----------------------|-------------------------------|----------------------|------------------------------|--|---------------------|--------------------------|----------------------------------|----------------------|------------------------------|
| | | | Served 100/100 or Better | Percent Served 100/100 or Better | Served 25/3 or Better | Percent Served 25/3 or Better | Served 10/1 or Better | Percent Served 10/1 or Better | Served 4/1 or Better | Percent Served 4/1 or Better | Underserved | Percent Underserved | Underserved in VTEL_ARRA | Percent Underserved in VTEL_ARRA | Underserved in CAFII | Percent Underserved in CAFII |
| ADDISON | Addison | 835 | 197 | 23.6% | 250 | 29.9% | 250 | 29.9% | 807 | 96.6% | 28 | 3.4% | 0 | 0.0% | 0 | 0.0% |
| ADDISON | Bridport | 656 | 43 | 6.6% | 51 | 7.8% | 51 | 7.8% | 568 | 86.6% | 88 | 13.4% | 0 | 0.0% | 0 | 0.0% |
| ADDISON | Bristol | 1601 | 429 | 26.8% | 1,456 | 90.9% | 1,456 | 90.9% | 1,581 | 98.8% | 20 | 1.2% | 0 | 0.0% | 0 | 0.0% |
| ADDISON | Cornwall | 572 | 0 | 0.0% | 0 | 0.0% | 0 | 0.0% | 539 | 94.2% | 33 | 5.8% | 19 | 57.6% | 0 | 0.0% |
| ADDISON | Ferrisburgh | 1659 | 98 | 5.9% | 814 | 49.1% | 939 | 56.6% | 1,565 | 94.3% | 94 | 5.7% | 0 | 0.0% | 45 | 47.9% |
| ADDISON | Goshen | 139 | 0 | 0.0% | 0 | 0.0% | 0 | 0.0% | 90 | 64.7% | 49 | 35.3% | 43 | 87.8% | 41 | 83.7% |
| ADDISON | Granville | 267 | 0 | 0.0% | 0 | 0.0% | 98 | 36.7% | 212 | 79.4% | 55 | 20.6% | 54 | 98.2% | 40 | 72.7% |
| ADDISON | Hancock | 240 | 111 | 46.3% | 111 | 46.3% | 172 | 71.7% | 213 | 88.8% | 27 | 11.3% | 27 | 100.0% | 23 | 85.2% |
| ADDISON | Leicester | 694 | 0 | 0.0% | 650 | 93.7% | 676 | 97.4% | 680 | 98.0% | 14 | 2.0% | 0 | 0.0% | 0 | 0.0% |
| ADDISON | Lincoln | 677 | 127 | 18.8% | 394 | 58.2% | 394 | 58.2% | 653 | 96.5% | 24 | 3.5% | 0 | 0.0% | 0 | 0.0% |
| ADDISON | Middlebury | 2917 | 0 | 0.0% | 2,754 | 94.4% | 2,815 | 96.5% | 2,900 | 99.4% | 17 | 0.6% | 2 | 11.8% | 0 | 0.0% |
| ADDISON | Monkton | 873 | 50 | 5.7% | 588 | 67.4% | 641 | 73.4% | 854 | 97.8% | 19 | 2.2% | 0 | 0.0% | 1 | 5.3% |
| ADDISON | New Haven | 792 | 119 | 15.0% | 439 | 55.4% | 439 | 55.4% | 747 | 94.3% | 45 | 5.7% | 0 | 0.0% | 9 | 20.0% |
| ADDISON | Orwell | 742 | 0 | 0.0% | 0 | 0.0% | 0 | 0.0% | 705 | 95.0% | 37 | 5.0% | 33 | 89.2% | 0 | 0.0% |
| ADDISON | Panton | 324 | 106 | 32.7% | 126 | 38.9% | 126 | 38.9% | 308 | 95.1% | 16 | 4.9% | 0 | 0.0% | 0 | 0.0% |
| ADDISON | Ripton | 372 | 0 | 0.0% | 0 | 0.0% | 166 | 44.6% | 285 | 76.6% | 87 | 23.4% | 68 | 78.2% | 75 | 86.2% |
| ADDISON | Salisbury | 830 | 0 | 0.0% | 76 | 9.2% | 390 | 47.0% | 759 | 91.4% | 71 | 8.6% | 34 | 47.9% | 28 | 39.4% |
| ADDISON | Shoreham | 737 | 0 | 0.0% | 0 | 0.0% | 0 | 0.0% | 701 | 95.1% | 36 | 4.9% | 30 | 83.3% | 0 | 0.0% |
| ADDISON | Starksboro | 914 | 101 | 11.1% | 589 | 64.4% | 589 | 64.4% | 891 | 97.5% | 23 | 2.5% | 0 | 0.0% | 0 | 0.0% |
| ADDISON | Vergennes | 999 | 0 | 0.0% | 993 | 99.4% | 993 | 99.4% | 995 | 99.6% | 4 | 0.4% | 0 | 0.0% | 0 | 0.0% |
| ADDISON | Waltham | 234 | 0 | 0.0% | 87 | 37.2% | 125 | 53.4% | 196 | 83.8% | 38 | 16.2% | 0 | 0.0% | 0 | 0.0% |
| ADDISON | Weybridge | 404 | 37 | 9.2% | 130 | 32.2% | 130 | 32.2% | 383 | 94.8% | 21 | 5.2% | 0 | 0.0% | 0 | 0.0% |
| ADDISON | Whiting | 183 | 0 | 0.0% | 0 | 0.0% | 0 | 0.0% | 176 | 96.2% | 7 | 3.8% | 4 | 57.1% | 0 | 0.0% |
| BENNINGTON | Arlington | 1291 | 0 | 0.0% | 1,085 | 84.0% | 1,152 | 89.2% | 1,195 | 92.6% | 96 | 7.4% | 14 | 14.6% | 1 | 1.0% |
| BENNINGTON | Bennington | 6028 | 0 | 0.0% | 5,928 | 98.3% | 5,934 | 98.4% | 5,969 | 99.0% | 59 | 1.0% | 12 | 20.3% | 8 | 13.6% |
| BENNINGTON | Dorset | 1464 | 10 | 0.7% | 1,160 | 79.2% | 1,229 | 83.9% | 1,345 | 91.9% | 119 | 8.1% | 8 | 6.7% | 26 | 21.8% |
| BENNINGTON | Glastenbury | 4 | 0 | 0.0% | 0 | 0.0% | 2 | 50.0% | 4 | 100.0% | 0 | 0.0% | 0 | 0.0% | 0 | 0.0% |
| BENNINGTON | Landgrove | 177 | 0 | 0.0% | 10 | 5.6% | 69 | 39.0% | 142 | 80.2% | 35 | 19.8% | 33 | 94.3% | 26 | 74.3% |
| BENNINGTON | Manchester | 2806 | 0 | 0.0% | 2,693 | 96.0% | 2,704 | 96.4% | 2,774 | 98.9% | 32 | 1.1% | 8 | 25.0% | 5 | 15.6% |
| BENNINGTON | Peru | 517 | 0 | 0.0% | 114 | 22.1% | 228 | 44.1% | 421 | 81.4% | 96 | 18.6% | 81 | 84.4% | 22 | 22.9% |
| BENNINGTON | Pownal | 1730 | 0 | 0.0% | 1,542 | 89.1% | 1,579 | 91.3% | 1,637 | 94.6% | 93 | 5.4% | 29 | 31.2% | 13 | 14.0% |
| BENNINGTON | Readsboro | 529 | 0 | 0.0% | 0 | 0.0% | 287 | 54.3% | 372 | 70.3% | 157 | 29.7% | 102 | 65.0% | 101 | 64.3% |
| BENNINGTON | Rupert | 497 | 110 | 22.1% | 110 | 22.1% | 202 | 40.6% | 407 | 81.9% | 90 | 18.1% | 74 | 82.2% | 31 | 34.4% |
| BENNINGTON | Sandgate | 319 | 0 | 0.0% | 19 | 6.0% | 130 | 40.8% | 259 | 81.2% | 60 | 18.8% | 57 | 95.0% | 48 | 80.0% |
| BENNINGTON | Searsburg | 132 | 0 | 0.0% | 2 | 1.5% | 41 | 31.1% | 102 | 77.3% | 30 | 22.7% | 22 | 73.3% | 18 | 60.0% |
| BENNINGTON | Shaftsbury | 1695 | 0 | 0.0% | 1,303 | 76.9% | 1,471 | 86.8% | 1,559 | 92.0% | 136 | 8.0% | 109 | 80.1% | 29 | 21.3% |
| BENNINGTON | Stamford | 470 | 0 | 0.0% | 0 | 0.0% | 195 | 41.5% | 401 | 85.3% | 69 | 14.7% | 69 | 100.0% | 48 | 69.6% |
| BENNINGTON | Sunderland | 596 | 0 | 0.0% | 549 | 92.1% | 551 | 92.4% | 565 | 94.8% | 31 | 5.2% | 5 | 16.1% | 8 | 25.8% |
| BENNINGTON | Winhall | 1700 | 0 | 0.0% | 1,533 | 90.2% | 1,542 | 90.7% | 1,608 | 94.6% | 92 | 5.4% | 56 | 60.9% | 13 | 14.1% |
| BENNINGTON | Woodford | 381 | 0 | 0.0% | 355 | 93.2% | 355 | 93.2% | 355 | 93.2% | 26 | 6.8% | 11 | 42.3% | 9 | 34.6% |
| CALEDONIA | Barnet | 1015 | 0 | 0.0% | 201 | 19.8% | 577 | 56.8% | 794 | 78.2% | 221 | 21.8% | 193 | 87.3% | 154 | 69.7% |
| CALEDONIA | Burke | 1004 | 0 | 0.0% | 549 | 54.7% | 588 | 58.6% | 688 | 68.5% | 316 | 31.5% | 250 | 79.1% | 109 | 34.5% |
| CALEDONIA | Danville | 1421 | 0 | 0.0% | 770 | 54.2% | 812 | 57.1% | 975 | 68.6% | 446 | 31.4% | 316 | 70.9% | 161 | 36.1% |
| CALEDONIA | Groton | 705 | 0 | 0.0% | 188 | 26.7% | 572 | 81.1% | 580 | 82.3% | 125 | 17.7% | 0 | 0.0% | 82 | 65.6% |
| CALEDONIA | Hardwick | 1426 | 16 | 1.1% | 962 | 67.5% | 1,013 | 71.0% | 1,308 | 91.7% | 118 | 8.3% | 63 | 53.4% | 65 | 55.1% |
| CALEDONIA | Kirby | 274 | 0 | 0.0% | 30 | 10.9% | 54 | 19.7% | 103 | 37.6% | 171 | 62.4% | 159 | 93.0% | 95 | 55.6% |
| CALEDONIA | Lyndon | 2277 | 0 | 0.0% | 1,874 | 82.3% | 1,898 | 83.4% | 1,998 | 87.7% | 279 | 12.3% | 171 | 61.3% | 77 | 27.6% |
| CALEDONIA | Newark | 597 | 0 | 0.0% | 0 | 0.0% | 69 | 11.6% | 289 | 48.4% | 308 | 51.6% | 296 | 96.1% | 247 | 80.2% |
| CALEDONIA | Peacham | 568 | 0 | 0.0% | 292 | 51.4% | 449 | 79.0% | 464 | 81.7% | 104 | 18.3% | 38 | 36.5% | 78 | 75.0% |
| CALEDONIA | Ryegate | 674 | 0 | 0.0% | 245 | 36.4% | 537 | 79.7% | 552 | 81.9% | 122 | 18.1% | 10 | 8.2% | 44 | 36.1% |
| CALEDONIA | Sheffield | 468 | 0 | 0.0% | 108 | 23.1% | 197 | 42.1% | 319 | 68.2% | 149 | 31.8% | 135 | 90.6% | 102 | 68.5% |
| CALEDONIA | St. Johnsbury | 2890 | 0 | 0.0% | 2,484 | 86.0% | 2,553 | 88.3% | 2,720 | 94.1% | 170 | 5.9% | 107 | 62.9% | 65 | 38.2% |
| CALEDONIA | Stannard | 141 | 0 | 0.0% | 0 | 0.0% | 20 | 14.2% | 96 | 68.1% | 45 | 31.9% | 44 | 97.8% | 33 | 73.3% |
| CALEDONIA | Sutton | 487 | 0 | 0.0% | 110 | 22.6% | 141 | 29.0% | 255 | 52.4% | 232 | 47.6% | 190 | 81.9% | 106 | 45.7% |
| CALEDONIA | Walden | 657 | 0 | 0.0% | 84 | 12.8% | 372 | 56.6% | 593 | 90.3% | 64 | 9.7% | 22 | 34.4% | 35 | 54.7% |

| County | Town | Total Buildings | Served locations are affirmatively reported as served by specific providers | | | | | | | | Underserved locations are potentially served at 4/1 by FairPoint | | | | | |
|------------|------------------|-----------------|---|----------------------------------|-----------------------|-------------------------------|-----------------------|-------------------------------|----------------------|------------------------------|--|---------------------|--------------------------|----------------------------------|----------------------|------------------------------|
| | | | Served 100/100 or Better | Percent Served 100/100 or Better | Served 25/3 or Better | Percent Served 25/3 or Better | Served 10/1 or Better | Percent Served 10/1 or Better | Served 4/1 or Better | Percent Served 4/1 or Better | Underserved | Percent Underserved | Underserved in VTEL_ARRA | Percent Underserved in VTEL_ARRA | Underserved in CAFII | Percent Underserved in CAFII |
| CALEDONIA | Waterford | 650 | 0 | 0.0% | 106 | 16.3% | 236 | 36.3% | 469 | 72.2% | 181 | 27.8% | 123 | 68.0% | 102 | 56.4% |
| CALEDONIA | Wheelock | 500 | 0 | 0.0% | 59 | 11.8% | 161 | 32.2% | 336 | 67.2% | 164 | 32.8% | 159 | 97.0% | 118 | 72.0% |
| CHITTENDEN | Bolton | 497 | 157 | 31.6% | 248 | 49.9% | 251 | 50.5% | 480 | 96.6% | 17 | 3.4% | 0 | 0.0% | 5 | 29.4% |
| CHITTENDEN | Buels Gore | 16 | 13 | 81.3% | 13 | 81.3% | 13 | 81.3% | 14 | 87.5% | 2 | 12.5% | 0 | 0.0% | 0 | 0.0% |
| CHITTENDEN | Burlington | 11615 | 10,574 | 91.0% | 11,585 | 99.7% | 11,585 | 99.7% | 11,615 | 100.0% | 0 | 0.0% | 0 | 0.0% | 0 | 0.0% |
| CHITTENDEN | Charlotte | 1858 | 88 | 4.7% | 1,195 | 64.3% | 1,198 | 64.5% | 1,818 | 97.8% | 40 | 2.2% | 0 | 0.0% | 0 | 0.0% |
| CHITTENDEN | Colchester | 6348 | 0 | 0.0% | 6,176 | 97.3% | 6,187 | 97.5% | 6,259 | 98.6% | 89 | 1.4% | 0 | 0.0% | 4 | 4.5% |
| CHITTENDEN | Essex | 7228 | 0 | 0.0% | 7,028 | 97.2% | 7,038 | 97.4% | 7,153 | 99.0% | 75 | 1.0% | 0 | 0.0% | 0 | 0.0% |
| CHITTENDEN | Hinesburg | 1902 | 213 | 11.2% | 1,358 | 71.4% | 1,358 | 71.4% | 1,851 | 97.3% | 51 | 2.7% | 0 | 0.0% | 0 | 0.0% |
| CHITTENDEN | Huntington | 892 | 7 | 0.8% | 625 | 70.1% | 625 | 70.1% | 881 | 98.8% | 11 | 1.2% | 0 | 0.0% | 0 | 0.0% |
| CHITTENDEN | Jericho | 1987 | 0 | 0.0% | 1,812 | 91.2% | 1,816 | 91.4% | 1,847 | 93.0% | 140 | 7.0% | 0 | 0.0% | 11 | 7.9% |
| CHITTENDEN | Milton | 4274 | 0 | 0.0% | 3,849 | 90.1% | 3,933 | 92.0% | 4,115 | 96.3% | 159 | 3.7% | 0 | 0.0% | 9 | 5.7% |
| CHITTENDEN | Richmond | 1718 | 416 | 24.2% | 1,565 | 91.1% | 1,565 | 91.1% | 1,699 | 98.9% | 19 | 1.1% | 0 | 0.0% | 0 | 0.0% |
| CHITTENDEN | Shelburne | 3176 | 0 | 0.0% | 3,043 | 95.8% | 3,065 | 96.5% | 3,098 | 97.5% | 78 | 2.5% | 0 | 0.0% | 11 | 14.1% |
| CHITTENDEN | South Burlington | 6954 | 170 | 2.4% | 6,829 | 98.2% | 6,830 | 98.2% | 6,871 | 98.8% | 83 | 1.2% | 0 | 0.0% | 2 | 2.4% |
| CHITTENDEN | St. George | 316 | 0 | 0.0% | 291 | 92.1% | 295 | 93.4% | 312 | 98.7% | 4 | 1.3% | 0 | 0.0% | 0 | 0.0% |
| CHITTENDEN | Underhill | 1238 | 0 | 0.0% | 937 | 75.7% | 1,056 | 85.3% | 1,189 | 96.0% | 49 | 4.0% | 0 | 0.0% | 6 | 12.2% |
| CHITTENDEN | Westford | 830 | 0 | 0.0% | 725 | 87.3% | 743 | 89.5% | 796 | 95.9% | 34 | 4.1% | 0 | 0.0% | 3 | 8.8% |
| CHITTENDEN | Williston | 4251 | 0 | 0.0% | 4,073 | 95.8% | 4,117 | 96.8% | 4,195 | 98.7% | 56 | 1.3% | 0 | 0.0% | 0 | 0.0% |
| CHITTENDEN | Winooski | 1736 | 2 | 0.1% | 1,730 | 99.7% | 1,733 | 99.8% | 1,736 | 100.0% | 0 | 0.0% | 0 | 0.0% | 0 | 0.0% |
| ESSEX | Averill | 245 | 0 | 0.0% | 0 | 0.0% | 0 | 0.0% | 19 | 7.8% | 226 | 92.2% | 226 | 100.0% | 113 | 50.0% |
| ESSEX | Averys Gore | 8 | 0 | 0.0% | 0 | 0.0% | 0 | 0.0% | 0 | 0.0% | 8 | 100.0% | 8 | 100.0% | 0 | 0.0% |
| ESSEX | Bloomfield | 236 | 0 | 0.0% | 0 | 0.0% | 0 | 0.0% | 57 | 24.2% | 161 | 68.2% | 74 | 98.7% | 67 | 89.3% |
| ESSEX | Brighton | 930 | 0 | 0.0% | 589 | 63.3% | 613 | 65.9% | 748 | 80.4% | 182 | 19.6% | 148 | 81.3% | 88 | 48.4% |
| ESSEX | Brunswick | 76 | 0 | 0.0% | 0 | 0.0% | 0 | 0.0% | 7 | 9.2% | 22 | 28.9% | 54 | 100.0% | 52 | 96.3% |
| ESSEX | Canaan | 621 | 279 | 44.9% | 279 | 44.9% | 372 | 59.9% | 454 | 73.1% | 167 | 26.9% | 134 | 80.2% | 109 | 65.3% |
| ESSEX | Concord | 889 | 0 | 0.0% | 265 | 29.8% | 456 | 51.3% | 688 | 77.4% | 201 | 22.6% | 177 | 88.1% | 84 | 41.8% |
| ESSEX | East Haven | 214 | 0 | 0.0% | 0 | 0.0% | 82 | 38.3% | 137 | 64.0% | 77 | 36.0% | 77 | 100.0% | 66 | 85.7% |
| ESSEX | Ferdinand | 77 | 0 | 0.0% | 0 | 0.0% | 0 | 0.0% | 3 | 3.9% | 13 | 16.9% | 64 | 100.0% | 52 | 81.3% |
| ESSEX | Granby | 101 | 0 | 0.0% | 0 | 0.0% | 0 | 0.0% | 36 | 35.6% | 66 | 65.3% | 35 | 34.7% | 24 | 68.6% |
| ESSEX | Guildhall | 183 | 0 | 0.0% | 0 | 0.0% | 0 | 0.0% | 53 | 29.0% | 138 | 75.4% | 45 | 24.6% | 39 | 86.7% |
| ESSEX | Lemington | 91 | 30 | 33.0% | 30 | 33.0% | 30 | 33.0% | 54 | 59.3% | 37 | 40.7% | 37 | 100.0% | 36 | 97.3% |
| ESSEX | Lewis | 47 | 0 | 0.0% | 0 | 0.0% | 0 | 0.0% | 0 | 0.0% | 47 | 100.0% | 47 | 100.0% | 0 | 0.0% |
| ESSEX | Lunenburg | 886 | 0 | 0.0% | 0 | 0.0% | 0 | 0.0% | 392 | 44.2% | 668 | 75.4% | 209 | 95.9% | 189 | 86.7% |
| ESSEX | Maidstone | 360 | 0 | 0.0% | 0 | 0.0% | 0 | 0.0% | 71 | 19.7% | 173 | 48.1% | 187 | 51.9% | 116 | 62.0% |
| ESSEX | Norton | 221 | 0 | 0.0% | 0 | 0.0% | 0 | 0.0% | 52 | 23.5% | 149 | 67.4% | 72 | 32.6% | 69 | 95.8% |
| ESSEX | Victory | 102 | 0 | 0.0% | 0 | 0.0% | 0 | 0.0% | 13 | 12.7% | 71 | 69.6% | 31 | 30.4% | 19 | 61.3% |
| ESSEX | Warners Grant | 2 | 0 | 0.0% | 0 | 0.0% | 0 | 0.0% | 0 | 0.0% | 2 | 100.0% | 2 | 100.0% | 0 | 0.0% |
| ESSEX | Warren Gore | 59 | 0 | 0.0% | 0 | 0.0% | 0 | 0.0% | 4 | 6.8% | 55 | 93.2% | 55 | 100.0% | 48 | 87.3% |
| FRANKLIN | Bakersfield | 646 | 0 | 0.0% | 210 | 32.5% | 308 | 47.7% | 550 | 85.1% | 96 | 14.9% | 59 | 61.5% | 63 | 65.6% |
| FRANKLIN | Berkshire | 721 | 0 | 0.0% | 88 | 12.2% | 324 | 44.9% | 597 | 82.8% | 124 | 17.2% | 108 | 87.1% | 102 | 82.3% |
| FRANKLIN | Enosburg | 1264 | 0 | 0.0% | 659 | 52.1% | 865 | 68.4% | 1,153 | 91.2% | 111 | 8.8% | 74 | 66.7% | 69 | 62.2% |
| FRANKLIN | Fairfax | 1730 | 0 | 0.0% | 731 | 42.3% | 1,117 | 64.6% | 1,568 | 90.6% | 162 | 9.4% | 0 | 0.0% | 60 | 37.0% |
| FRANKLIN | Fairfield | 977 | 0 | 0.0% | 88 | 9.0% | 365 | 37.4% | 769 | 78.7% | 208 | 21.3% | 166 | 79.8% | 165 | 79.3% |
| FRANKLIN | Fletcher | 628 | 0 | 0.0% | 0 | 0.0% | 0 | 0.0% | 206 | 32.8% | 550 | 87.6% | 78 | 12.4% | 32 | 41.0% |
| FRANKLIN | Franklin | 923 | 381 | 41.3% | 382 | 41.4% | 421 | 45.6% | 899 | 97.4% | 24 | 2.6% | 20 | 83.3% | 13 | 54.2% |
| FRANKLIN | Georgia | 2026 | 0 | 0.0% | 1,729 | 85.3% | 1,825 | 90.1% | 1,944 | 96.0% | 82 | 4.0% | 0 | 0.0% | 6 | 7.3% |
| FRANKLIN | Highgate | 1823 | 87 | 4.8% | 1,764 | 96.8% | 1,766 | 96.9% | 1,797 | 98.6% | 26 | 1.4% | 0 | 0.0% | 0 | 0.0% |
| FRANKLIN | Montgomery | 801 | 0 | 0.0% | 227 | 28.3% | 697 | 87.0% | 699 | 87.3% | 102 | 12.7% | 2 | 2.0% | 69 | 67.6% |
| FRANKLIN | Richford | 1051 | 0 | 0.0% | 721 | 68.6% | 756 | 71.9% | 903 | 85.9% | 148 | 14.1% | 73 | 49.3% | 81 | 54.7% |
| FRANKLIN | Sheldon | 948 | 67 | 7.1% | 265 | 28.0% | 378 | 39.9% | 845 | 89.1% | 103 | 10.9% | 50 | 48.5% | 38 | 36.9% |
| FRANKLIN | St. Albans City | 2549 | 0 | 0.0% | 2,549 | 100.0% | 2,549 | 100.0% | 2,549 | 100.0% | 0 | 0.0% | 0 | 0.0% | 0 | 0.0% |
| FRANKLIN | St. Albans Town | 3089 | 0 | 0.0% | 2,847 | 92.2% | 2,899 | 93.8% | 3,011 | 97.5% | 78 | 2.5% | 2 | 2.6% | 0 | 0.0% |
| FRANKLIN | Swanton | 3076 | 0 | 0.0% | 2,861 | 93.0% | 2,871 | 93.3% | 2,909 | 94.6% | 167 | 5.4% | 6 | 3.6% | 9 | 5.4% |
| GRAND ISLE | Alburgh | 1817 | 0 | 0.0% | 0 | 0.0% | 490 | 27.0% | 792 | 43.6% | 1,025 | 56.4% | 0 | 0.0% | 563 | 54.9% |
| GRAND ISLE | Grand Isle | 1273 | 0 | 0.0% | 1,261 | 99.1% | 1,263 | 99.2% | 1,266 | 99.5% | 7 | 0.5% | 0 | 0.0% | 0 | 0.0% |
| GRAND ISLE | Isle La Motte | 567 | 0 | 0.0% | 0 | 0.0% | 0 | 0.0% | 386 | 68.1% | 386 | 68.1% | 0 | 0.0% | 142 | 78.5% |

| County | Town | Total Buildings | Served locations are affirmatively reported as served by specific providers | | | | | | | | Underserved locations are potentially served at 4/1 by FairPoint | | | | | |
|------------|--------------|-----------------|---|----------------------------------|-----------------------|-------------------------------|-----------------------|-------------------------------|----------------------|------------------------------|--|---------------------|--------------------------|----------------------------------|----------------------|------------------------------|
| | | | Served 100/100 or Better | Percent Served 100/100 or Better | Served 25/3 or Better | Percent Served 25/3 or Better | Served 10/1 or Better | Percent Served 10/1 or Better | Served 4/1 or Better | Percent Served 4/1 or Better | Underserved | Percent Underserved | Underserved in VTEL_ARRA | Percent Underserved in VTEL_ARRA | Underserved in CAFII | Percent Underserved in CAFII |
| GRAND ISLE | North Hero | 1085 | 0 | 0.0% | 1,003 | 92.4% | 1,011 | 93.2% | 1,013 | 93.4% | 72 | 6.6% | 0 | 0.0% | 0 | 0.0% |
| GRAND ISLE | South Hero | 1426 | 0 | 0.0% | 1,384 | 97.1% | 1,384 | 97.1% | 1,389 | 97.4% | 37 | 2.6% | 0 | 0.0% | 0 | 0.0% |
| LAMOILLE | Belvidere | 226 | 0 | 0.0% | 0 | 0.0% | 83 | 36.7% | 215 | 95.1% | 11 | 4.9% | 11 | 100.0% | 9 | 81.8% |
| LAMOILLE | Cambridge | 1672 | 0 | 0.0% | 577 | 34.5% | 878 | 52.5% | 1,542 | 92.2% | 130 | 7.8% | 90 | 69.2% | 76 | 58.5% |
| LAMOILLE | Eden | 821 | 0 | 0.0% | 0 | 0.0% | 323 | 39.3% | 613 | 74.7% | 208 | 25.3% | 177 | 85.1% | 171 | 82.2% |
| LAMOILLE | Elmore | 552 | 0 | 0.0% | 0 | 0.0% | 248 | 44.9% | 471 | 85.3% | 81 | 14.7% | 72 | 88.9% | 68 | 84.0% |
| LAMOILLE | Hyde Park | 1382 | 0 | 0.0% | 1,002 | 72.5% | 1,124 | 81.3% | 1,327 | 96.0% | 55 | 4.0% | 18 | 32.7% | 11 | 20.0% |
| LAMOILLE | Johnson | 1289 | 0 | 0.0% | 917 | 71.1% | 965 | 74.9% | 1,130 | 87.7% | 159 | 12.3% | 100 | 62.9% | 57 | 35.8% |
| LAMOILLE | Morristown | 2394 | 0 | 0.0% | 1,862 | 77.8% | 1,972 | 82.4% | 2,339 | 97.7% | 55 | 2.3% | 17 | 30.9% | 20 | 36.4% |
| LAMOILLE | Stowe | 3078 | 0 | 0.0% | 1,880 | 61.1% | 2,364 | 76.8% | 3,028 | 98.4% | 50 | 1.6% | 15 | 30.0% | 35 | 70.0% |
| LAMOILLE | Waterville | 336 | 0 | 0.0% | 0 | 0.0% | 182 | 54.2% | 313 | 93.2% | 23 | 6.8% | 11 | 47.8% | 17 | 73.9% |
| LAMOILLE | Wolcott | 838 | 0 | 0.0% | 0 | 0.0% | 358 | 42.7% | 786 | 93.8% | 52 | 6.2% | 39 | 75.0% | 28 | 53.8% |
| ORANGE | Bradford | 1265 | 281 | 22.2% | 886 | 70.0% | 957 | 75.7% | 1,193 | 94.3% | 72 | 5.7% | 0 | 0.0% | 21 | 29.2% |
| ORANGE | Braintree | 677 | 198 | 29.2% | 491 | 72.5% | 535 | 79.0% | 604 | 89.2% | 73 | 10.8% | 32 | 43.8% | 26 | 35.6% |
| ORANGE | Brookfield | 715 | 46 | 6.4% | 49 | 6.9% | 182 | 25.5% | 415 | 58.0% | 300 | 42.0% | 273 | 91.0% | 243 | 81.0% |
| ORANGE | Chelsea | 729 | 185 | 25.4% | 304 | 41.7% | 416 | 57.1% | 575 | 78.9% | 154 | 21.1% | 118 | 76.6% | 105 | 68.2% |
| ORANGE | Corinth | 924 | 0 | 0.0% | 0 | 0.0% | 1 | 0.1% | 753 | 81.5% | 171 | 18.5% | 0 | 0.0% | 34 | 19.9% |
| ORANGE | Fairlee | 669 | 476 | 71.2% | 477 | 71.3% | 538 | 80.4% | 606 | 90.6% | 63 | 9.4% | 0 | 0.0% | 21 | 33.3% |
| ORANGE | Newbury | 1367 | 12 | 0.9% | 804 | 58.8% | 1,001 | 73.2% | 1,157 | 84.6% | 210 | 15.4% | 0 | 0.0% | 147 | 70.0% |
| ORANGE | Orange | 550 | 0 | 0.0% | 40 | 7.3% | 208 | 37.8% | 470 | 85.5% | 80 | 14.5% | 21 | 26.3% | 28 | 35.0% |
| ORANGE | Randolph | 2021 | 330 | 16.3% | 1,785 | 88.3% | 1,798 | 89.0% | 1,858 | 91.9% | 163 | 8.1% | 99 | 60.7% | 54 | 33.1% |
| ORANGE | Strafford | 630 | 609 | 96.7% | 609 | 96.7% | 609 | 96.7% | 612 | 97.1% | 18 | 2.9% | 16 | 88.9% | 16 | 88.9% |
| ORANGE | Thetford | 1384 | 1,340 | 96.8% | 1,355 | 97.9% | 1,357 | 98.0% | 1,357 | 98.0% | 27 | 2.0% | 8 | 29.6% | 10 | 37.0% |
| ORANGE | Topsham | 741 | 6 | 0.8% | 6 | 0.8% | 32 | 4.3% | 632 | 85.3% | 109 | 14.7% | 0 | 0.0% | 20 | 18.3% |
| ORANGE | Tunbridge | 768 | 192 | 25.0% | 270 | 35.2% | 404 | 52.6% | 620 | 80.7% | 148 | 19.3% | 140 | 94.6% | 58 | 39.2% |
| ORANGE | Vershire | 460 | 290 | 63.0% | 290 | 63.0% | 348 | 75.7% | 415 | 90.2% | 45 | 9.8% | 0 | 0.0% | 41 | 91.1% |
| ORANGE | Washington | 616 | 0 | 0.0% | 198 | 32.1% | 266 | 43.2% | 517 | 83.9% | 99 | 16.1% | 0 | 0.0% | 74 | 74.7% |
| ORANGE | West Fairlee | 422 | 108 | 25.6% | 108 | 25.6% | 254 | 60.2% | 347 | 82.2% | 75 | 17.8% | 0 | 0.0% | 37 | 49.3% |
| ORANGE | Williamstown | 1456 | 0 | 0.0% | 837 | 57.5% | 1,078 | 74.0% | 1,359 | 93.3% | 97 | 6.7% | 37 | 38.1% | 16 | 16.5% |
| ORLEANS | Albany | 615 | 20 | 3.3% | 20 | 3.3% | 285 | 46.3% | 534 | 86.8% | 81 | 13.2% | 76 | 93.8% | 73 | 90.1% |
| ORLEANS | Barton | 1478 | 0 | 0.0% | 931 | 63.0% | 991 | 67.1% | 1,297 | 87.8% | 181 | 12.2% | 135 | 74.6% | 59 | 32.6% |
| ORLEANS | Brownington | 558 | 0 | 0.0% | 323 | 57.9% | 438 | 78.5% | 500 | 89.6% | 58 | 10.4% | 25 | 43.1% | 2 | 3.4% |
| ORLEANS | Charleston | 768 | 0 | 0.0% | 460 | 59.9% | 506 | 65.9% | 637 | 82.9% | 131 | 17.1% | 98 | 74.8% | 24 | 18.3% |
| ORLEANS | Coventry | 531 | 0 | 0.0% | 242 | 45.6% | 289 | 54.4% | 376 | 70.8% | 155 | 29.2% | 86 | 55.5% | 72 | 46.5% |
| ORLEANS | Craftsbury | 720 | 58 | 8.1% | 58 | 8.1% | 214 | 29.7% | 621 | 86.3% | 99 | 13.8% | 38 | 38.4% | 66 | 66.7% |
| ORLEANS | Derby | 2473 | 0 | 0.0% | 1,908 | 77.2% | 2,057 | 83.2% | 2,260 | 91.4% | 213 | 8.6% | 114 | 53.5% | 16 | 7.5% |
| ORLEANS | Glover | 806 | 0 | 0.0% | 119 | 14.8% | 371 | 46.0% | 655 | 81.3% | 151 | 18.7% | 141 | 93.4% | 123 | 81.5% |
| ORLEANS | Greensboro | 824 | 7 | 0.8% | 82 | 10.0% | 355 | 43.1% | 764 | 92.7% | 60 | 7.3% | 30 | 50.0% | 25 | 41.7% |
| ORLEANS | Holland | 458 | 0 | 0.0% | 5 | 1.1% | 133 | 29.0% | 338 | 73.8% | 120 | 26.2% | 115 | 95.8% | 107 | 89.2% |
| ORLEANS | Irasburg | 628 | 0 | 0.0% | 178 | 28.3% | 246 | 39.2% | 402 | 64.0% | 226 | 36.0% | 200 | 88.5% | 163 | 72.1% |
| ORLEANS | Jay | 538 | 0 | 0.0% | 341 | 63.4% | 341 | 63.4% | 355 | 66.0% | 183 | 34.0% | 13 | 7.1% | 3 | 1.6% |
| ORLEANS | Lowell | 556 | 0 | 0.0% | 0 | 0.0% | 181 | 32.6% | 315 | 56.7% | 241 | 43.3% | 237 | 98.3% | 183 | 75.9% |
| ORLEANS | Morgan | 809 | 0 | 0.0% | 533 | 65.9% | 583 | 72.1% | 702 | 86.8% | 107 | 13.2% | 97 | 90.7% | 22 | 20.6% |
| ORLEANS | Newport City | 1879 | 0 | 0.0% | 1,858 | 98.9% | 1,860 | 99.0% | 1,870 | 99.5% | 9 | 0.5% | 4 | 44.4% | 1 | 11.1% |
| ORLEANS | Newport Town | 865 | 0 | 0.0% | 408 | 47.2% | 481 | 55.6% | 749 | 86.6% | 116 | 13.4% | 77 | 66.4% | 49 | 42.2% |
| ORLEANS | Troy | 879 | 0 | 0.0% | 682 | 77.6% | 711 | 80.9% | 779 | 88.6% | 100 | 11.4% | 55 | 55.0% | 18 | 18.0% |
| ORLEANS | Westfield | 375 | 0 | 0.0% | 121 | 32.3% | 182 | 48.5% | 218 | 58.1% | 157 | 41.9% | 124 | 79.0% | 68 | 43.3% |
| ORLEANS | Westmore | 590 | 0 | 0.0% | 0 | 0.0% | 165 | 28.0% | 467 | 79.2% | 123 | 20.8% | 116 | 94.3% | 73 | 59.3% |
| RUTLAND | Benson | 607 | 0 | 0.0% | 0 | 0.0% | 0 | 0.0% | 508 | 83.7% | 99 | 16.3% | 93 | 93.9% | 0 | 0.0% |
| RUTLAND | Brandon | 1850 | 0 | 0.0% | 1,609 | 87.0% | 1,671 | 90.3% | 1,780 | 96.2% | 70 | 3.8% | 16 | 22.9% | 6 | 8.6% |
| RUTLAND | Castleton | 2212 | 0 | 0.0% | 2,032 | 91.9% | 2,073 | 93.7% | 2,174 | 98.3% | 38 | 1.7% | 3 | 7.9% | 11 | 28.9% |
| RUTLAND | Chittenden | 718 | 1 | 0.1% | 598 | 83.3% | 606 | 84.4% | 645 | 89.8% | 73 | 10.2% | 25 | 34.2% | 4 | 5.5% |
| RUTLAND | Clarendon | 1203 | 17 | 1.4% | 1,150 | 95.6% | 1,152 | 95.8% | 1,155 | 96.0% | 48 | 4.0% | 3 | 6.3% | 4 | 8.3% |
| RUTLAND | Danby | 770 | 769 | 99.9% | 769 | 99.9% | 769 | 99.9% | 770 | 100.0% | 0 | 0.0% | 0 | 0.0% | 0 | 0.0% |
| RUTLAND | Fair Haven | 1143 | 0 | 0.0% | 1,050 | 91.9% | 1,065 | 93.2% | 1,116 | 97.6% | 27 | 2.4% | 9 | 33.3% | 5 | 18.5% |
| RUTLAND | Hubbardton | 645 | 0 | 0.0% | 66 | 10.2% | 66 | 10.2% | 618 | 95.8% | 27 | 4.2% | 19 | 70.4% | 0 | 0.0% |
| RUTLAND | Ira | 223 | 155 | 69.5% | 208 | 93.3% | 208 | 93.3% | 210 | 94.2% | 13 | 5.8% | 2 | 15.4% | 9 | 69.2% |

| County | Town | Total Buildings | Served locations are affirmatively reported as served by specific providers | | | | | | | | Underserved locations are potentially served at 4/1 by FairPoint | | | | | |
|------------|--------------------|-----------------|---|----------------------------------|-----------------------|-------------------------------|-----------------------|-------------------------------|----------------------|------------------------------|--|---------------------|--------------------------|----------------------------------|----------------------|------------------------------|
| | | | Served 100/100 or Better | Percent Served 100/100 or Better | Served 25/3 or Better | Percent Served 25/3 or Better | Served 10/1 or Better | Percent Served 10/1 or Better | Served 4/1 or Better | Percent Served 4/1 or Better | Underserved | Percent Underserved | Underserved in VTEL_ARRA | Percent Underserved in VTEL_ARRA | Underserved in CAFII | Percent Underserved in CAFII |
| RUTLAND | Killington | 1362 | 1,117 | 82.0% | 1,352 | 99.3% | 1,356 | 99.6% | 1,360 | 99.9% | 2 | 0.1% | 2 | 100.0% | 0 | 0.0% |
| RUTLAND | Mendon | 643 | 2 | 0.3% | 568 | 88.3% | 575 | 89.4% | 589 | 91.6% | 54 | 8.4% | 13 | 24.1% | 14 | 25.9% |
| RUTLAND | Middletown Springs | 448 | 446 | 99.6% | 446 | 99.6% | 446 | 99.6% | 446 | 99.6% | 2 | 0.4% | 0 | 0.0% | 0 | 0.0% |
| RUTLAND | Mount Holly | 1102 | 1,085 | 98.5% | 1,086 | 98.5% | 1,086 | 98.5% | 1,101 | 99.9% | 1 | 0.1% | 0 | 0.0% | 0 | 0.0% |
| RUTLAND | Mount Tabor | 141 | 141 | 100.0% | 141 | 100.0% | 141 | 100.0% | 141 | 100.0% | 0 | 0.0% | 0 | 0.0% | 0 | 0.0% |
| RUTLAND | Pawlet | 834 | 482 | 57.8% | 727 | 87.2% | 727 | 87.2% | 753 | 90.3% | 81 | 9.7% | 30 | 37.0% | 44 | 54.3% |
| RUTLAND | Pittsfield | 409 | 393 | 96.1% | 393 | 96.1% | 394 | 96.3% | 397 | 97.1% | 12 | 2.9% | 6 | 50.0% | 10 | 83.3% |
| RUTLAND | Pittsford | 1412 | 0 | 0.0% | 1,247 | 88.3% | 1,255 | 88.9% | 1,318 | 93.3% | 94 | 6.7% | 0 | 0.0% | 37 | 39.4% |
| RUTLAND | Poultney | 1693 | 3 | 0.2% | 1,442 | 85.2% | 1,493 | 88.2% | 1,609 | 95.0% | 84 | 5.0% | 50 | 59.5% | 24 | 28.6% |
| RUTLAND | Proctor | 769 | 0 | 0.0% | 758 | 98.6% | 759 | 98.7% | 760 | 98.8% | 9 | 1.2% | 0 | 0.0% | 1 | 11.1% |
| RUTLAND | Rutland | 1828 | 0 | 0.0% | 1,791 | 98.0% | 1,791 | 98.0% | 1,826 | 99.9% | 2 | 0.1% | 0 | 0.0% | 0 | 0.0% |
| RUTLAND | Rutland City | 6103 | 0 | 0.0% | 6,103 | 100.0% | 6,103 | 100.0% | 6,103 | 100.0% | 0 | 0.0% | 0 | 0.0% | 0 | 0.0% |
| RUTLAND | Shrewsbury | 605 | 434 | 71.7% | 579 | 95.7% | 585 | 96.7% | 595 | 98.3% | 10 | 1.7% | 6 | 60.0% | 0 | 0.0% |
| RUTLAND | Sudbury | 429 | 0 | 0.0% | 0 | 0.0% | 0 | 0.2% | 415 | 96.7% | 14 | 3.3% | 14 | 100.0% | 11 | 78.6% |
| RUTLAND | Tinmouth | 361 | 361 | 100.0% | 361 | 100.0% | 361 | 100.0% | 361 | 100.0% | 0 | 0.0% | 0 | 0.0% | 0 | 0.0% |
| RUTLAND | Wallingford | 1029 | 1,029 | 100.0% | 1,029 | 100.0% | 1,029 | 100.0% | 1,029 | 100.0% | 0 | 0.0% | 0 | 0.0% | 0 | 0.0% |
| RUTLAND | Wells | 961 | 205 | 21.3% | 928 | 96.6% | 929 | 96.7% | 939 | 97.7% | 22 | 2.3% | 2 | 9.1% | 0 | 0.0% |
| RUTLAND | West Haven | 136 | 0 | 0.0% | 0 | 0.0% | 82 | 60.3% | 132 | 97.1% | 4 | 2.9% | 4 | 100.0% | 1 | 25.0% |
| RUTLAND | West Rutland | 949 | 0 | 0.0% | 916 | 96.5% | 919 | 96.8% | 929 | 97.9% | 20 | 2.1% | 10 | 50.0% | 2 | 10.0% |
| WASHINGTON | Barre City | 2905 | 0 | 0.0% | 2,869 | 98.8% | 2,875 | 99.0% | 2,905 | 100.0% | 0 | 0.0% | 0 | 0.0% | 0 | 0.0% |
| WASHINGTON | Barre Town | 3349 | 0 | 0.0% | 3,178 | 94.9% | 3,245 | 96.9% | 3,346 | 99.9% | 3 | 0.1% | 0 | 0.0% | 0 | 0.0% |
| WASHINGTON | Berlin | 1378 | 0 | 0.0% | 1,083 | 78.6% | 1,105 | 80.2% | 1,344 | 97.5% | 34 | 2.5% | 13 | 38.2% | 12 | 35.3% |
| WASHINGTON | Cabot | 855 | 0 | 0.0% | 471 | 55.1% | 691 | 80.8% | 766 | 89.6% | 89 | 10.4% | 17 | 19.1% | 30 | 33.7% |
| WASHINGTON | Calais | 878 | 0 | 0.0% | 314 | 35.8% | 521 | 59.3% | 853 | 97.2% | 25 | 2.8% | 6 | 24.0% | 9 | 36.0% |
| WASHINGTON | Duxbury | 664 | 0 | 0.0% | 312 | 47.0% | 463 | 69.7% | 554 | 83.4% | 110 | 16.6% | 0 | 0.0% | 14 | 12.7% |
| WASHINGTON | East Montpelier | 1162 | 0 | 0.0% | 783 | 67.4% | 918 | 79.0% | 1,148 | 98.8% | 14 | 1.2% | 9 | 64.3% | 4 | 28.6% |
| WASHINGTON | Fayston | 967 | 101 | 10.4% | 201 | 20.8% | 201 | 20.8% | 951 | 98.3% | 16 | 1.7% | 0 | 0.0% | 0 | 0.0% |
| WASHINGTON | Marshfield | 761 | 0 | 0.0% | 287 | 37.7% | 575 | 75.6% | 740 | 97.2% | 21 | 2.8% | 18 | 85.7% | 13 | 61.9% |
| WASHINGTON | Middlesex | 837 | 0 | 0.0% | 429 | 51.3% | 503 | 60.1% | 688 | 82.2% | 149 | 17.8% | 77 | 51.7% | 72 | 48.3% |
| WASHINGTON | Montpelier | 2839 | 0 | 0.0% | 2,823 | 99.4% | 2,825 | 99.5% | 2,839 | 100.0% | 0 | 0.0% | 0 | 0.0% | 0 | 0.0% |
| WASHINGTON | Moretown | 822 | 49 | 6.0% | 416 | 50.6% | 419 | 51.0% | 716 | 87.1% | 106 | 12.9% | 0 | 0.0% | 35 | 33.0% |
| WASHINGTON | Northfield | 1923 | 0 | 0.0% | 1,380 | 71.8% | 1,380 | 71.8% | 1,914 | 99.5% | 9 | 0.5% | 3 | 33.3% | 2 | 22.2% |
| WASHINGTON | Plainfield | 579 | 0 | 0.0% | 243 | 42.0% | 362 | 62.5% | 564 | 97.4% | 15 | 2.6% | 5 | 33.3% | 0 | 0.0% |
| WASHINGTON | Roxbury | 498 | 0 | 0.0% | 0 | 0.0% | 0 | 0.0% | 470 | 94.4% | 28 | 5.6% | 11 | 39.3% | 15 | 53.6% |
| WASHINGTON | Waitsfield | 1027 | 463 | 45.1% | 500 | 48.7% | 500 | 48.7% | 1,003 | 97.7% | 24 | 2.3% | 0 | 0.0% | 0 | 0.0% |
| WASHINGTON | Warren | 1528 | 510 | 33.4% | 564 | 36.9% | 564 | 36.9% | 1,491 | 97.6% | 37 | 2.4% | 0 | 0.0% | 0 | 0.0% |
| WASHINGTON | Waterbury | 2269 | 0 | 0.0% | 2,031 | 89.5% | 2,048 | 90.3% | 2,091 | 92.2% | 178 | 7.8% | 31 | 17.4% | 13 | 7.3% |
| WASHINGTON | Woodbury | 769 | 0 | 0.0% | 352 | 45.8% | 442 | 57.5% | 734 | 95.4% | 35 | 4.6% | 31 | 88.6% | 17 | 48.6% |
| WASHINGTON | Worcester | 465 | 0 | 0.0% | 210 | 45.2% | 242 | 52.0% | 390 | 83.9% | 75 | 16.1% | 37 | 49.3% | 3 | 4.0% |
| WINDHAM | Athens | 258 | 258 | 100.0% | 258 | 100.0% | 258 | 100.0% | 258 | 100.0% | 0 | 0.0% | 0 | 0.0% | 0 | 0.0% |
| WINDHAM | Brattleboro | 4671 | 0 | 0.0% | 4,475 | 95.8% | 4,536 | 97.1% | 4,639 | 99.3% | 32 | 0.7% | 8 | 25.0% | 3 | 9.4% |
| WINDHAM | Brookline | 310 | 0 | 0.0% | 292 | 94.2% | 295 | 95.2% | 297 | 95.8% | 13 | 4.2% | 7 | 53.8% | 1 | 7.7% |
| WINDHAM | Dover | 2053 | 0 | 0.0% | 1,667 | 81.2% | 1,851 | 90.2% | 2,026 | 98.7% | 27 | 1.3% | 13 | 48.1% | 18 | 66.7% |
| WINDHAM | Dummerston | 960 | 105 | 10.9% | 667 | 69.5% | 741 | 77.2% | 800 | 83.3% | 160 | 16.7% | 50 | 31.3% | 48 | 30.0% |
| WINDHAM | Grafton | 556 | 556 | 100.0% | 556 | 100.0% | 556 | 100.0% | 556 | 100.0% | 0 | 0.0% | 0 | 0.0% | 0 | 0.0% |
| WINDHAM | Guilford | 1158 | 0 | 0.0% | 862 | 74.4% | 918 | 79.3% | 1,015 | 87.7% | 143 | 12.3% | 0 | 0.0% | 7 | 4.9% |
| WINDHAM | Halifax | 607 | 0 | 0.0% | 0 | 0.0% | 158 | 26.0% | 339 | 55.8% | 268 | 44.2% | 259 | 96.6% | 251 | 93.7% |
| WINDHAM | Jamaica | 1094 | 0 | 0.0% | 682 | 62.3% | 809 | 73.9% | 962 | 87.9% | 132 | 12.1% | 112 | 84.8% | 30 | 22.7% |
| WINDHAM | Londonderry | 1404 | 2 | 0.1% | 1,143 | 81.4% | 1,161 | 82.7% | 1,273 | 90.7% | 131 | 9.3% | 74 | 56.5% | 12 | 9.2% |
| WINDHAM | Marlboro | 611 | 0 | 0.0% | 1 | 0.2% | 224 | 36.7% | 437 | 71.5% | 174 | 28.5% | 124 | 71.3% | 112 | 64.4% |
| WINDHAM | Newfane | 1099 | 80 | 7.3% | 785 | 71.4% | 848 | 77.2% | 944 | 85.9% | 155 | 14.1% | 57 | 36.8% | 31 | 20.0% |
| WINDHAM | Putney | 1143 | 164 | 14.3% | 821 | 71.8% | 887 | 77.6% | 1,080 | 94.5% | 63 | 5.5% | 17 | 27.0% | 22 | 34.9% |
| WINDHAM | Rockingham | 2173 | 619 | 28.5% | 2,108 | 97.0% | 2,114 | 97.3% | 2,133 | 98.2% | 40 | 1.8% | 15 | 37.5% | 1 | 2.5% |
| WINDHAM | Somerset | 26 | 0 | 0.0% | 0 | 0.0% | 0 | 0.0% | 0 | 0.0% | 26 | 100.0% | 26 | 100.0% | 25 | 96.2% |
| WINDHAM | Stratton | 628 | 0 | 0.0% | 367 | 58.4% | 410 | 65.3% | 517 | 82.3% | 111 | 17.7% | 62 | 55.9% | 57 | 51.4% |
| WINDHAM | Townshend | 807 | 28 | 3.5% | 496 | 61.5% | 567 | 70.3% | 685 | 84.9% | 122 | 15.1% | 98 | 80.3% | 69 | 56.6% |
| WINDHAM | Vernon | 876 | 0 | 0.0% | 804 | 91.8% | 814 | 92.9% | 849 | 96.9% | 27 | 3.1% | 0 | 0.0% | 3 | 11.1% |

| County | Town | Total Buildings | Served locations are affirmatively reported as served by specific providers | | | | | | | | Underserved locations are potentially served at 4/1 by FairPoint | | | | | |
|---------------|---------------|-----------------|---|----------------------------------|-----------------------|-------------------------------|-----------------------|-------------------------------|----------------------|------------------------------|--|---------------------|--------------------------|----------------------------------|----------------------|------------------------------|
| | | | Served 100/100 or Better | Percent Served 100/100 or Better | Served 25/3 or Better | Percent Served 25/3 or Better | Served 10/1 or Better | Percent Served 10/1 or Better | Served 4/1 or Better | Percent Served 4/1 or Better | Underserved | Percent Underserved | Underserved in VTEL_ARRA | Percent Underserved in VTEL_ARRA | Underserved in CAFII | Percent Underserved in CAFII |
| WINDHAM | Wardsboro | 866 | 0 | 0.0% | 0 | 0.0% | 374 | 43.2% | 707 | 81.6% | 159 | 18.4% | 143 | 89.9% | 117 | 73.6% |
| WINDHAM | Westminster | 1612 | 181 | 11.2% | 1,411 | 87.5% | 1,458 | 90.4% | 1,558 | 96.7% | 54 | 3.3% | 16 | 29.6% | 3 | 5.6% |
| WINDHAM | Whitingham | 949 | 0 | 0.0% | 0 | 0.0% | 497 | 52.4% | 786 | 82.8% | 163 | 17.2% | 108 | 66.3% | 114 | 69.9% |
| WINDHAM | Wilmington | 2361 | 104 | 4.4% | 1,838 | 77.8% | 1,932 | 81.8% | 2,218 | 93.9% | 143 | 6.1% | 43 | 30.1% | 73 | 51.0% |
| WINDHAM | Windham | 444 | 222 | 50.0% | 223 | 50.2% | 377 | 84.9% | 419 | 94.4% | 25 | 5.6% | 21 | 84.0% | 21 | 84.0% |
| WINDSOR | Andover | 464 | 463 | 99.8% | 463 | 99.8% | 463 | 99.8% | 463 | 99.8% | 1 | 0.2% | 0 | 0.0% | 0 | 0.0% |
| WINDSOR | Baltimore | 110 | 0 | 0.0% | 0 | 0.0% | 0 | 0.0% | 108 | 98.2% | 2 | 1.8% | 0 | 0.0% | 0 | 0.0% |
| WINDSOR | Barnard | 756 | 708 | 93.7% | 708 | 93.7% | 737 | 97.5% | 745 | 98.5% | 11 | 1.5% | 10 | 90.9% | 10 | 90.9% |
| WINDSOR | Bethel | 1024 | 312 | 30.5% | 675 | 65.9% | 807 | 78.8% | 899 | 87.8% | 125 | 12.2% | 99 | 79.2% | 59 | 47.2% |
| WINDSOR | Bridgewater | 641 | 592 | 92.4% | 592 | 92.4% | 602 | 93.9% | 635 | 99.1% | 6 | 0.9% | 5 | 83.3% | 5 | 83.3% |
| WINDSOR | Cavendish | 958 | 0 | 0.0% | 726 | 75.8% | 726 | 75.8% | 932 | 97.3% | 26 | 2.7% | 18 | 69.2% | 15 | 57.7% |
| WINDSOR | Chester | 1754 | 1,751 | 99.8% | 1,752 | 99.9% | 1,752 | 99.9% | 1,754 | 100.0% | 0 | 0.0% | 0 | 0.0% | 0 | 0.0% |
| WINDSOR | Hartford | 4800 | 4 | 0.1% | 4,511 | 94.0% | 4,611 | 96.1% | 4,784 | 99.7% | 16 | 0.3% | 10 | 62.5% | 9 | 56.3% |
| WINDSOR | Hartland | 1575 | 1,138 | 72.3% | 1,532 | 97.3% | 1,539 | 97.7% | 1,562 | 99.2% | 13 | 0.8% | 12 | 92.3% | 8 | 61.5% |
| WINDSOR | Ludlow | 2416 | 0 | 0.0% | 2,141 | 88.6% | 2,141 | 88.6% | 2,412 | 99.8% | 4 | 0.2% | 0 | 0.0% | 0 | 0.0% |
| WINDSOR | Norwich | 1530 | 640 | 41.8% | 1,377 | 90.0% | 1,405 | 91.8% | 1,449 | 94.7% | 81 | 5.3% | 75 | 92.6% | 14 | 17.3% |
| WINDSOR | Plymouth | 834 | 618 | 74.1% | 731 | 87.6% | 731 | 87.6% | 833 | 99.9% | 1 | 0.1% | 0 | 0.0% | 0 | 0.0% |
| WINDSOR | Pomfret | 566 | 492 | 86.9% | 494 | 87.3% | 537 | 94.9% | 559 | 98.8% | 7 | 1.2% | 6 | 85.7% | 4 | 57.1% |
| WINDSOR | Reading | 513 | 56 | 10.9% | 240 | 46.8% | 297 | 57.9% | 416 | 81.1% | 97 | 18.9% | 78 | 80.4% | 73 | 75.3% |
| WINDSOR | Rochester | 831 | 131 | 15.8% | 422 | 50.8% | 511 | 61.5% | 744 | 89.5% | 87 | 10.5% | 54 | 62.1% | 43 | 49.4% |
| WINDSOR | Royalton | 1310 | 562 | 42.9% | 808 | 61.7% | 950 | 72.5% | 1,213 | 92.6% | 97 | 7.4% | 59 | 60.8% | 22 | 22.7% |
| WINDSOR | Sharon | 746 | 229 | 30.7% | 235 | 31.5% | 391 | 52.4% | 682 | 91.4% | 64 | 8.6% | 52 | 81.3% | 36 | 56.3% |
| WINDSOR | Springfield | 3764 | 3,757 | 99.8% | 3,763 | 100.0% | 3,763 | 100.0% | 3,764 | 100.0% | 0 | 0.0% | 0 | 0.0% | 0 | 0.0% |
| WINDSOR | Stockbridge | 586 | 136 | 23.2% | 136 | 23.2% | 313 | 53.4% | 529 | 90.3% | 57 | 9.7% | 49 | 86.0% | 47 | 82.5% |
| WINDSOR | Weathersfield | 1544 | 86 | 5.6% | 1,242 | 80.4% | 1,257 | 81.4% | 1,520 | 98.4% | 24 | 1.6% | 21 | 87.5% | 10 | 41.7% |
| WINDSOR | West Windsor | 736 | 715 | 97.1% | 716 | 97.3% | 720 | 97.8% | 728 | 98.9% | 8 | 1.1% | 4 | 50.0% | 2 | 25.0% |
| WINDSOR | Weston | 611 | 0 | 0.0% | 504 | 82.5% | 511 | 83.6% | 541 | 88.5% | 70 | 11.5% | 23 | 32.9% | 13 | 18.6% |
| WINDSOR | Windsor | 1466 | 5 | 0.3% | 1,407 | 96.0% | 1,407 | 96.0% | 1,413 | 96.4% | 53 | 3.6% | 0 | 0.0% | 8 | 15.1% |
| WINDSOR | Woodstock | 1887 | 165 | 8.7% | 1,611 | 85.4% | 1,719 | 91.1% | 1,830 | 97.0% | 57 | 3.0% | 18 | 31.6% | 16 | 28.1% |
| TOTALS | | 303,835 | 40,838 | 13.4% | 222,040 | 73.1% | 241,962 | 79.6% | 282,937 | 93.1% | 20,898 | 6.9% | 10,997 | 3.6% | 9,406 | 3.1% |